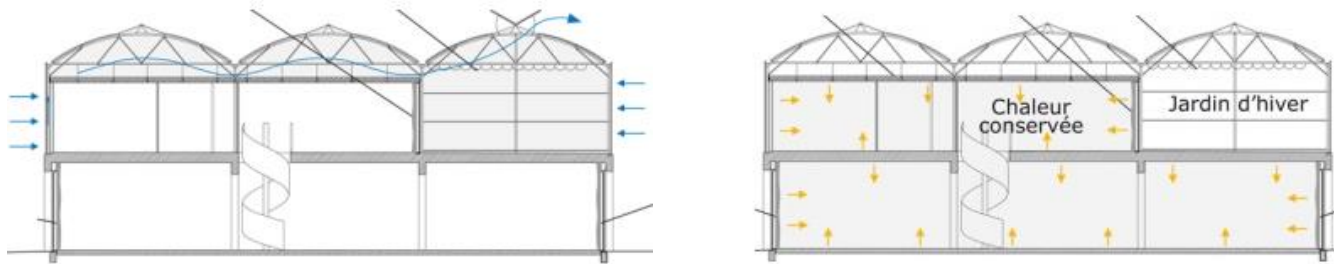




*Social Housing, Mulhouse

*Materiality for Savings

construction made of polycarbonate provides for ample
light



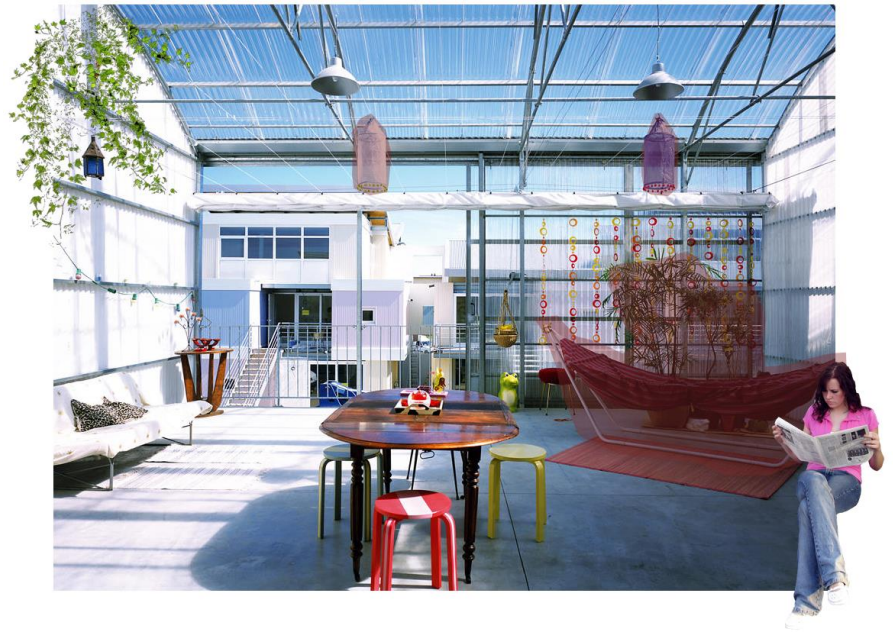
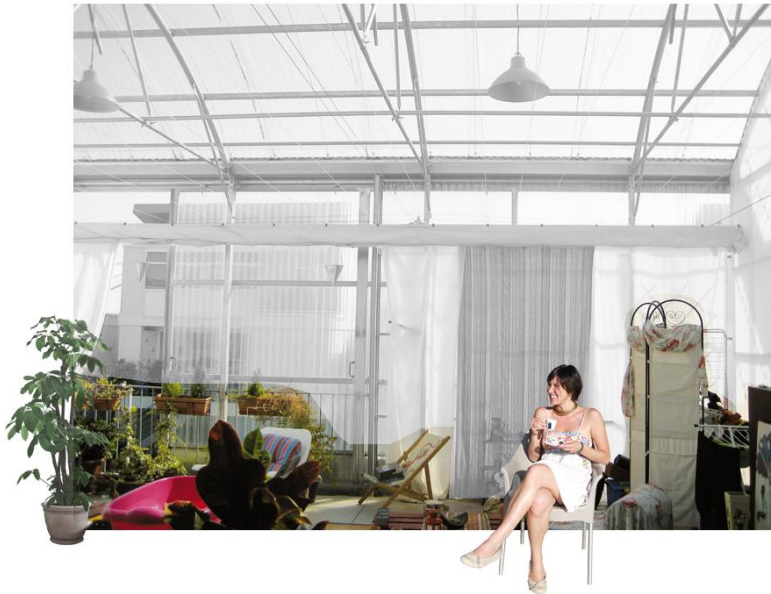
*Elements Defined by the Owner

sliding elements and awnings

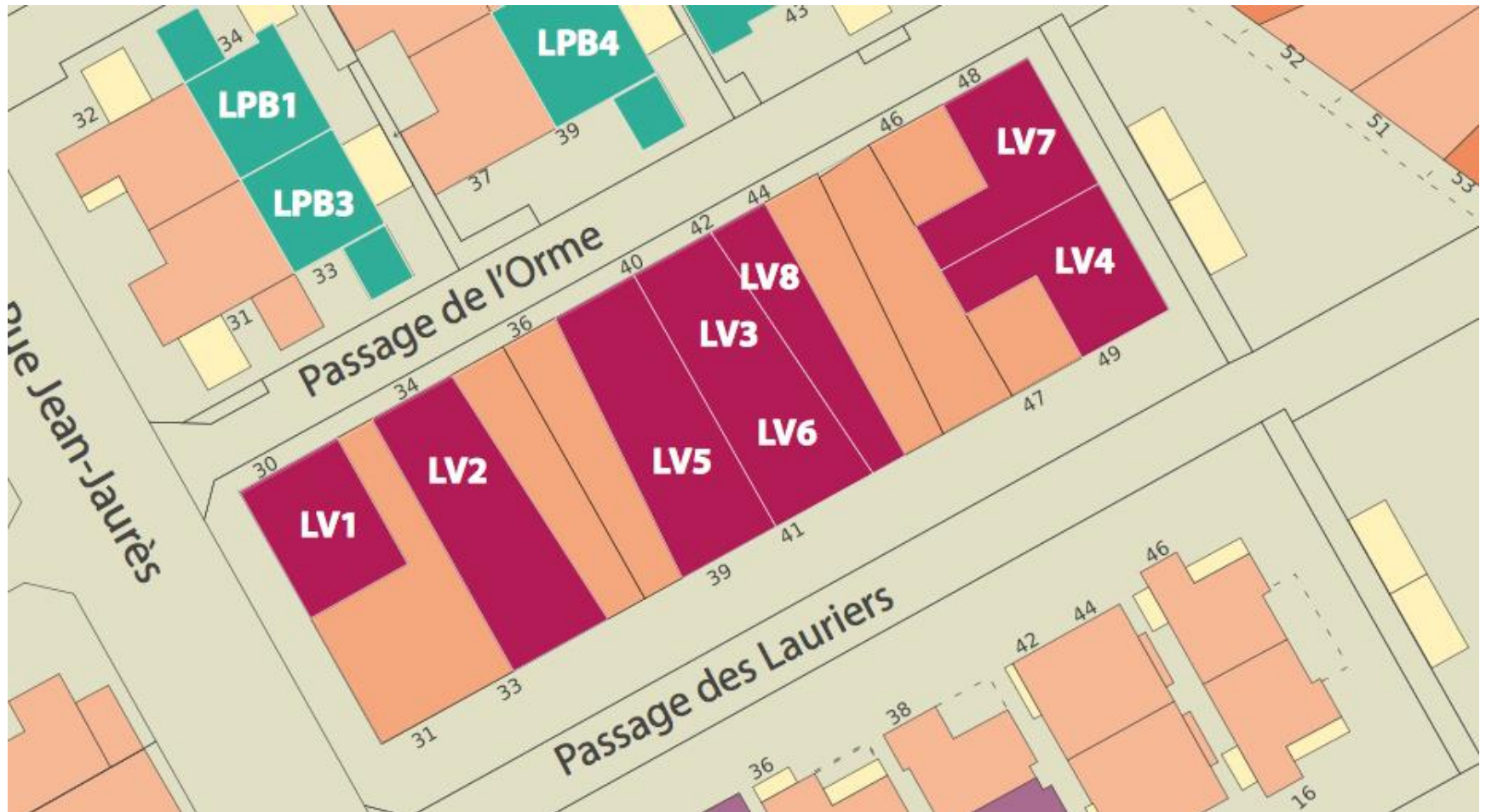


*Controlling the Size of the House

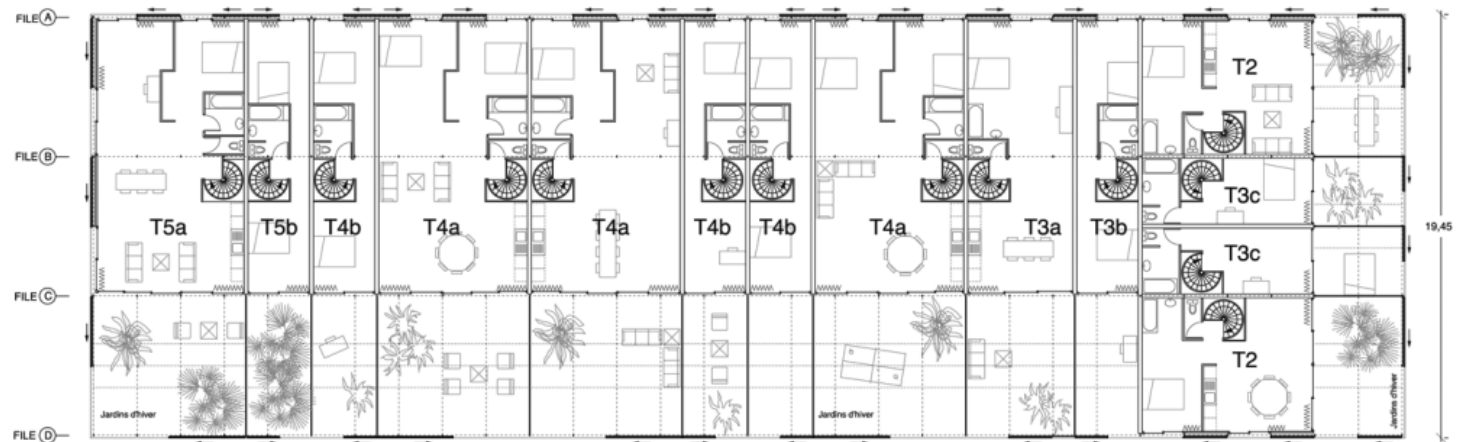
flexible shiftability of the gardens



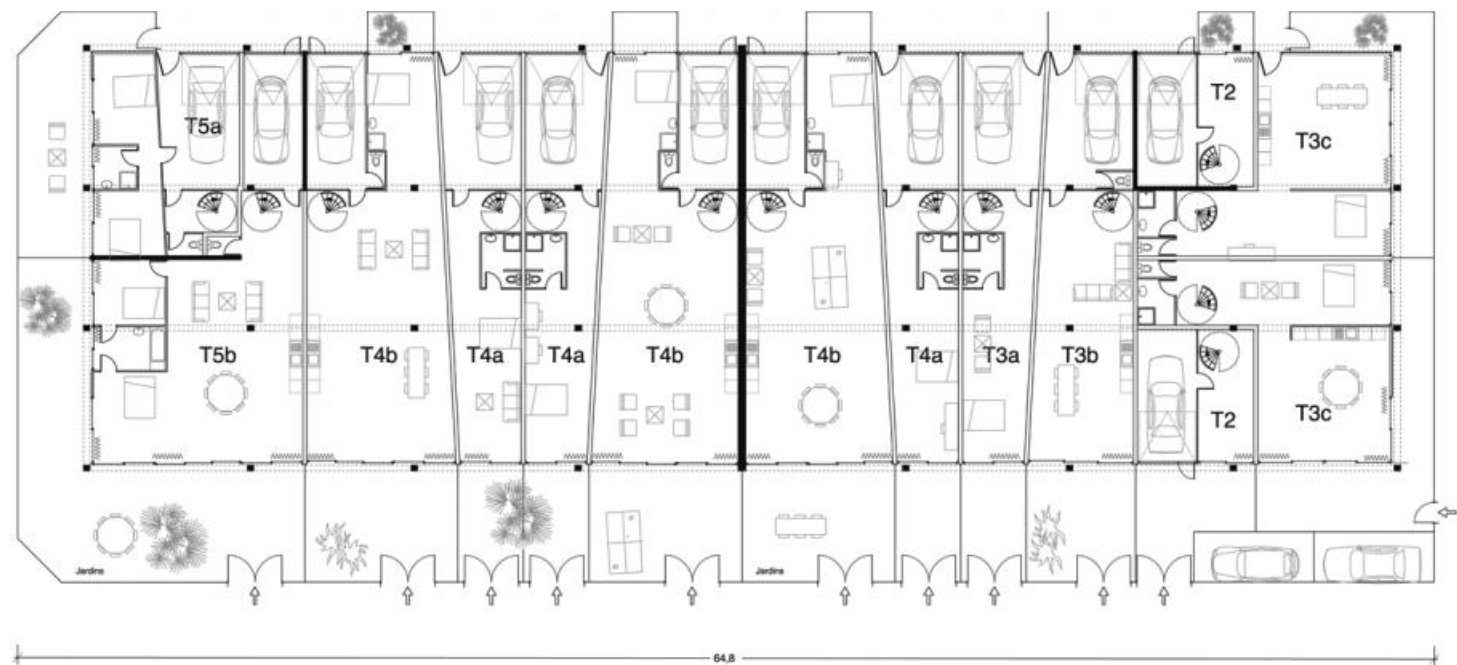
*Site Analysis





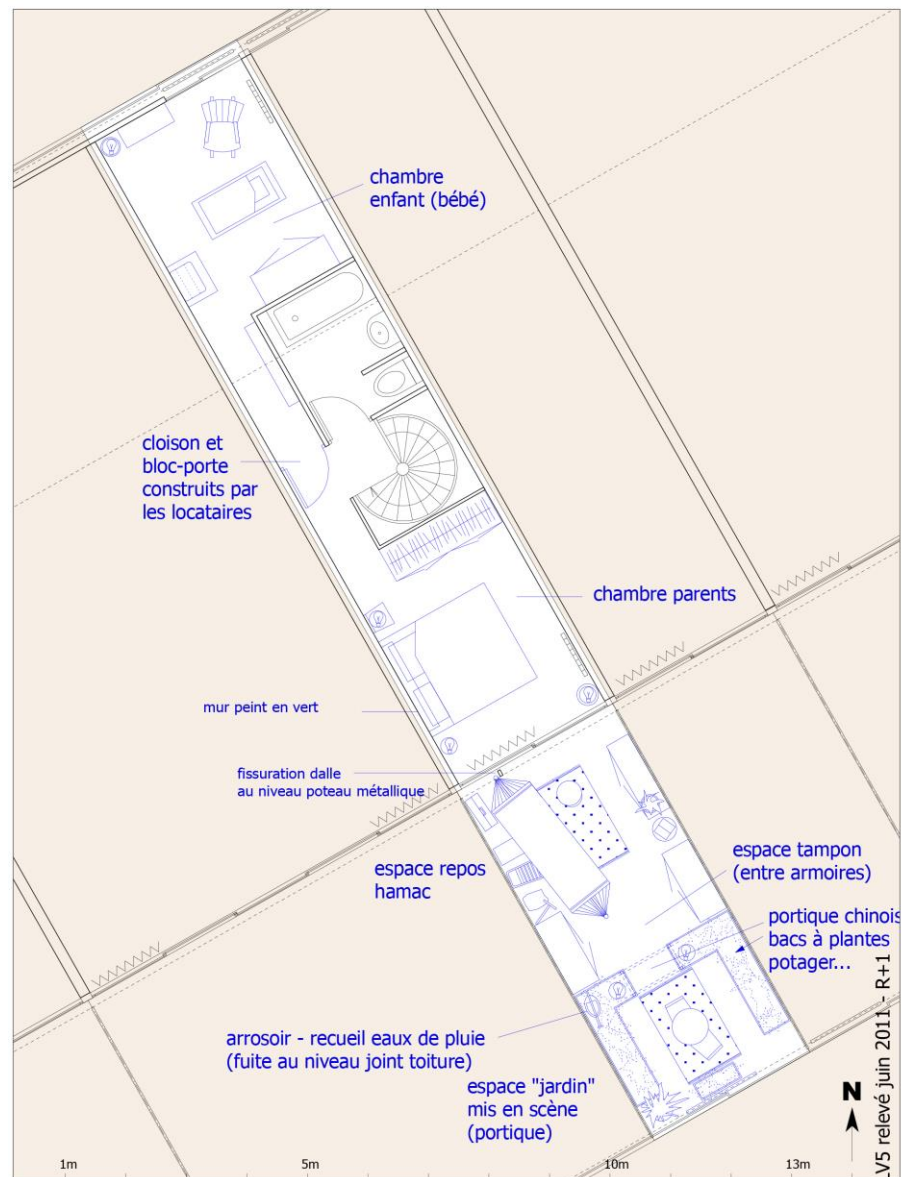
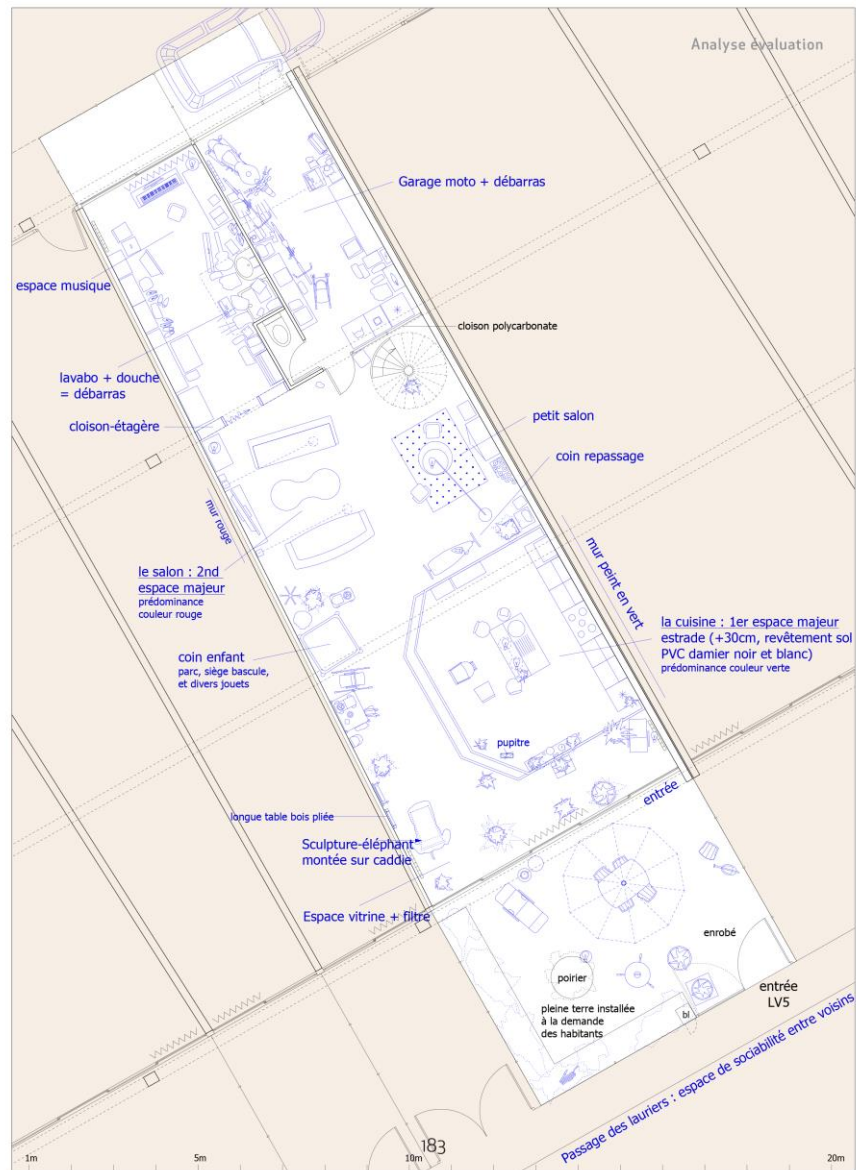


PLAN R+1



PLAN RDC







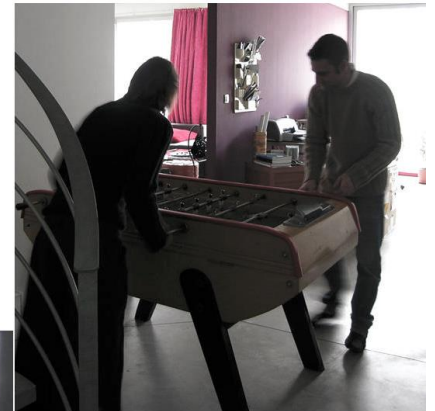
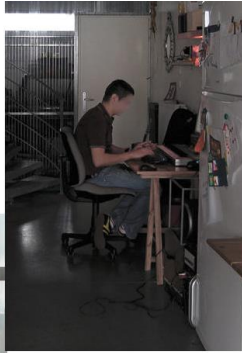
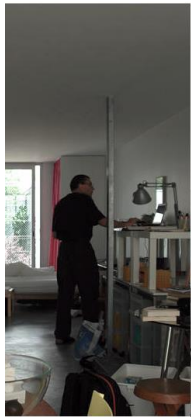


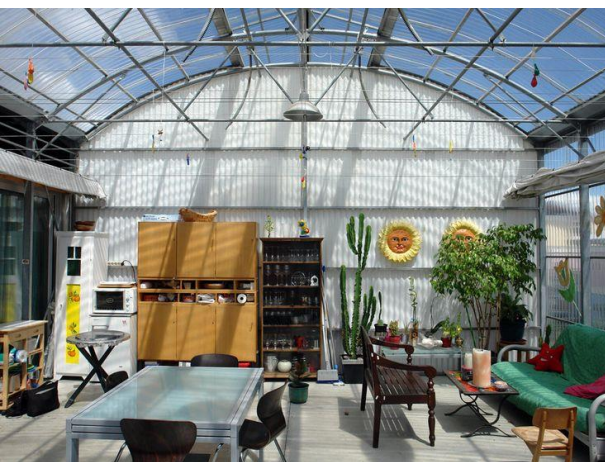


The project is akin to living in a loft: 'poor' materials and a scruffy-looking finish give the building a factory-like charm



*Residence profile





APARTMENT
2-bedroom type

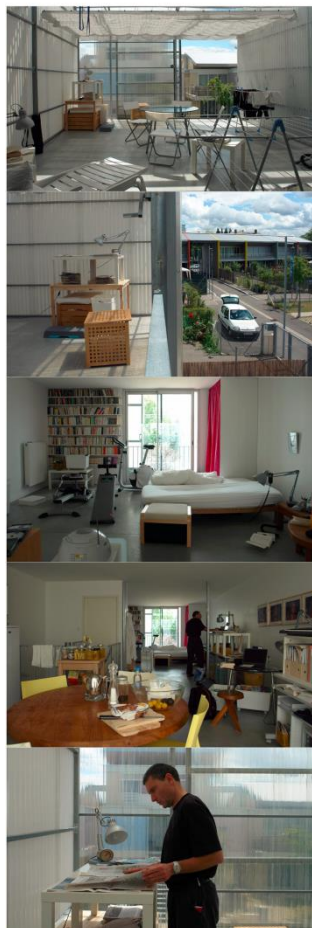
apartment area 130.2 m²
including
living room/kitchen 55.5 m²
winter garden 19 m²
garage 15 m²

rent € 348 (2005)

LOGEMENT TYPE T3
(2 chambres)

surface logement 130.2 m²
dont
séjour/cuisine 55.5 m²
jardin d'hiver 19 m²
garage 15 m²

loyer 348 € (2005)



APARTMENT
3-bedroom type

apartment area 187.8 m²
including
living room/kitchen 47 m²
winter garden 45.8 m²
garage 15 m²

rent € 446 (2005)

LOGEMENT TYPE T4
(3 chambres)

surface logement 187.8 m²
dont
séjour/cuisine 47 m²
jardin d'hiver 45.8 m²
garage 15 m²

loyer 446 € (2005)



APARTMENT
1-bedroom type

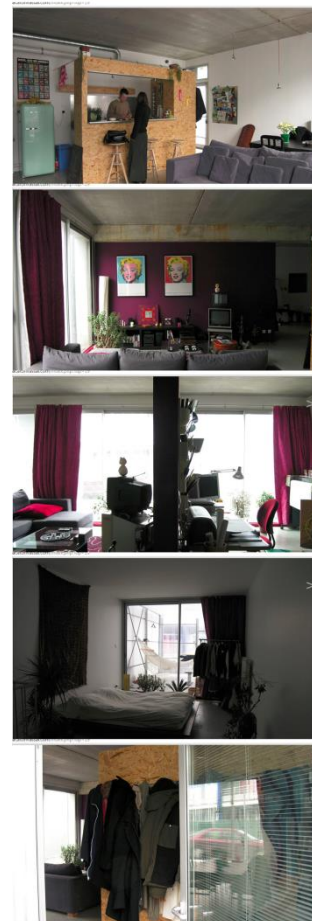
apartment area 102.1 m²
including
living room/kitchen 28.5 m²
winter garden 25.6 m²
garage 15 m²

rent € 272 (2005)

LOGEMENT TYPE T2
(1 chambre)

surface logement 102.1 m²
dont
séjour/cuisine 28.5 m²
jardin d'hiver 25.6 m²
garage 15 m²

loyer 272 € (2005)



APARTMENT
2-bedroom type

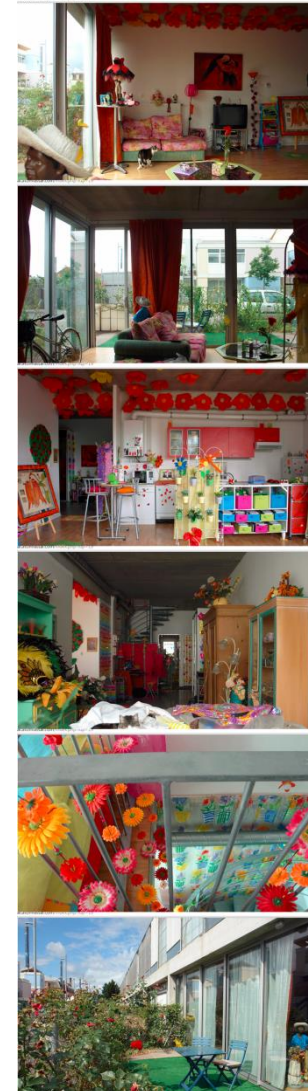
apartment area 105.2 m²
including
living room/kitchen 37.1 m²
winter garden 12.7 m²
garage 15 m²

rent € 348 (2005)

LOGEMENT TYPE T3
(2 chambres)

surface logement 105.2 m²
dont
séjour/cuisine 37.1 m²
jardin d'hiver 12.7 m²
garage 15 m²

loyer 348 € (2005)



*thank you

