

Quinta Monroy houses

PREVI, LIMA

Phillip Toskas
Joanna Spanou

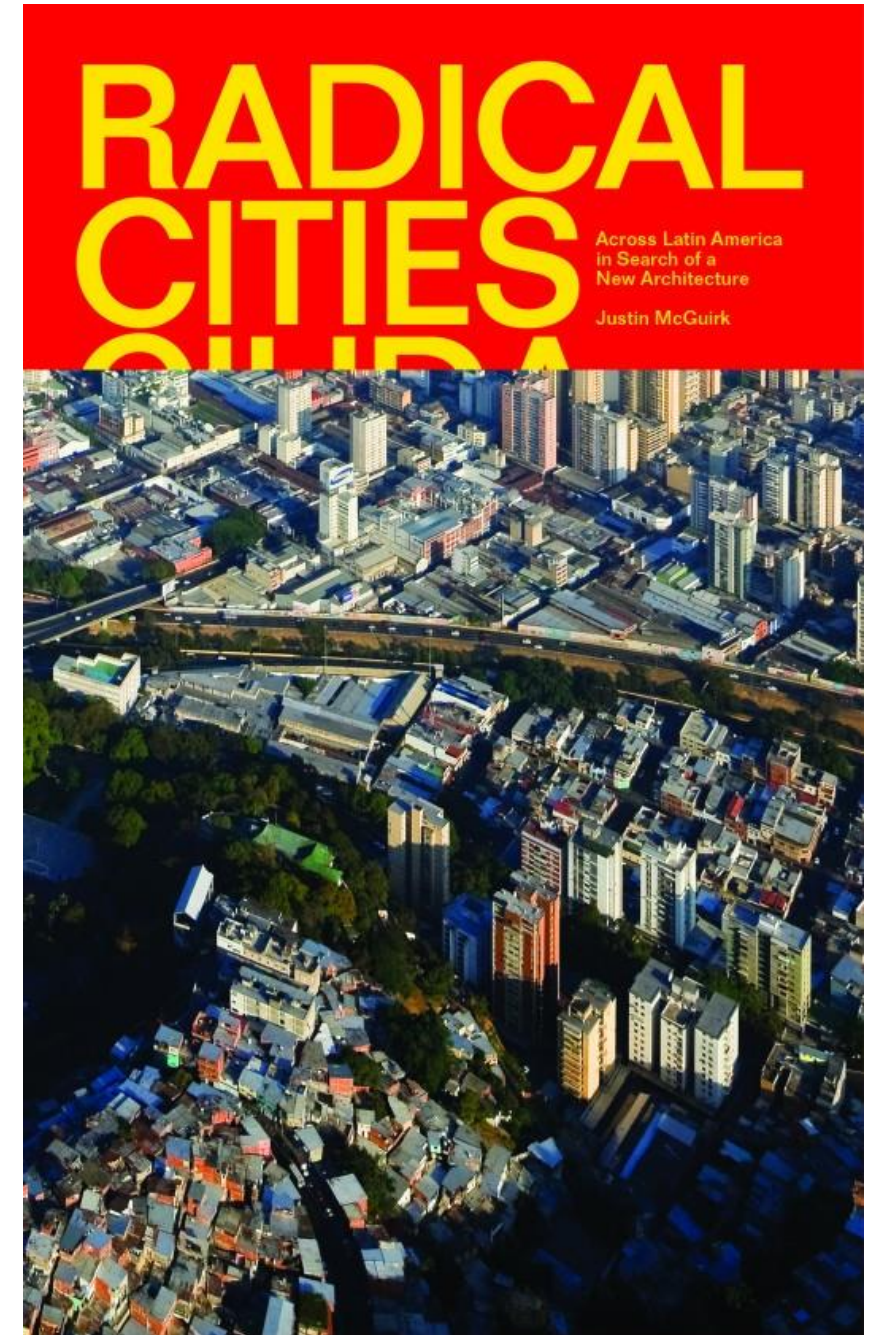
Previous Condition

- Low-quality massive housing
- New massive housing type
- New proposition in order to solve the problems of that time



Competition

- The project was funded by the UN
- The initial government was very positive
- Famous architects participated in the project
- At the final project almost all ideas were implemented
- Project by multiple architects



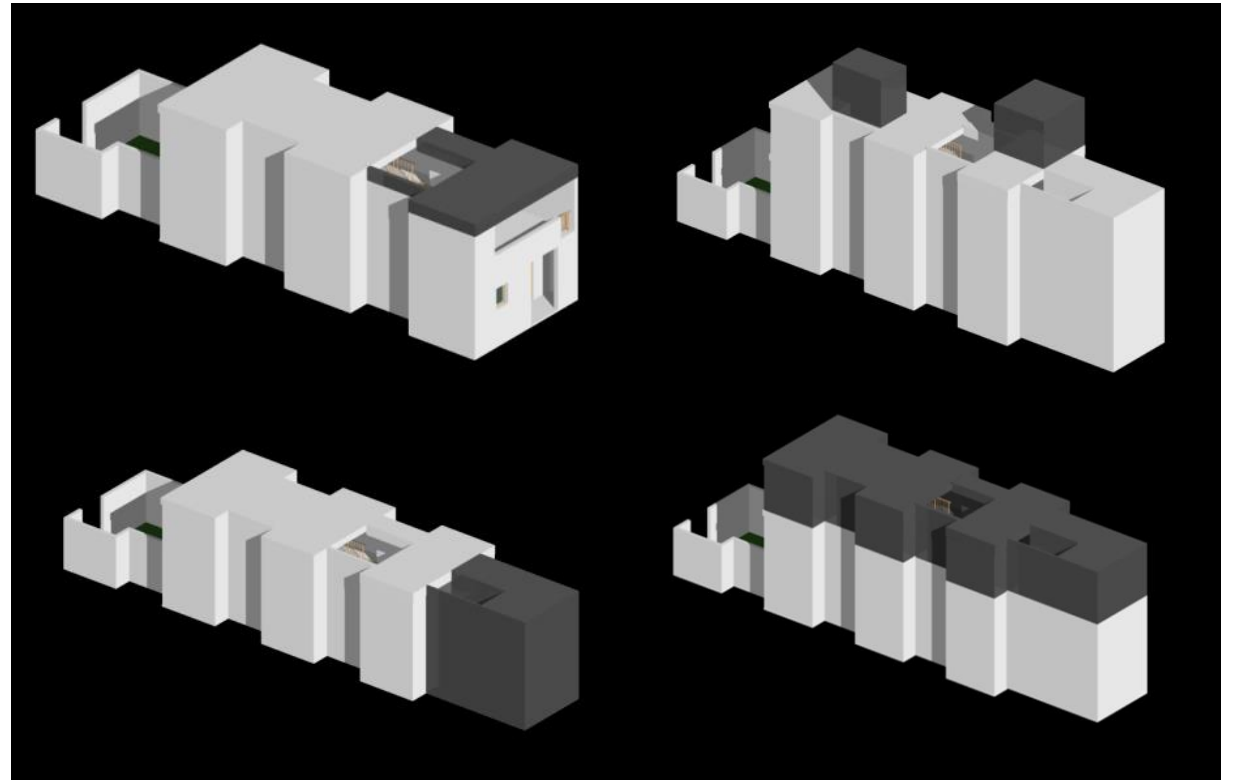
Main Idea

- Quality
- Residences adjusted in a human scale
- Influenced by traditional Peruvian houses
- Less space used compared to the traditional houses
- The users adjusted the residence to their needs



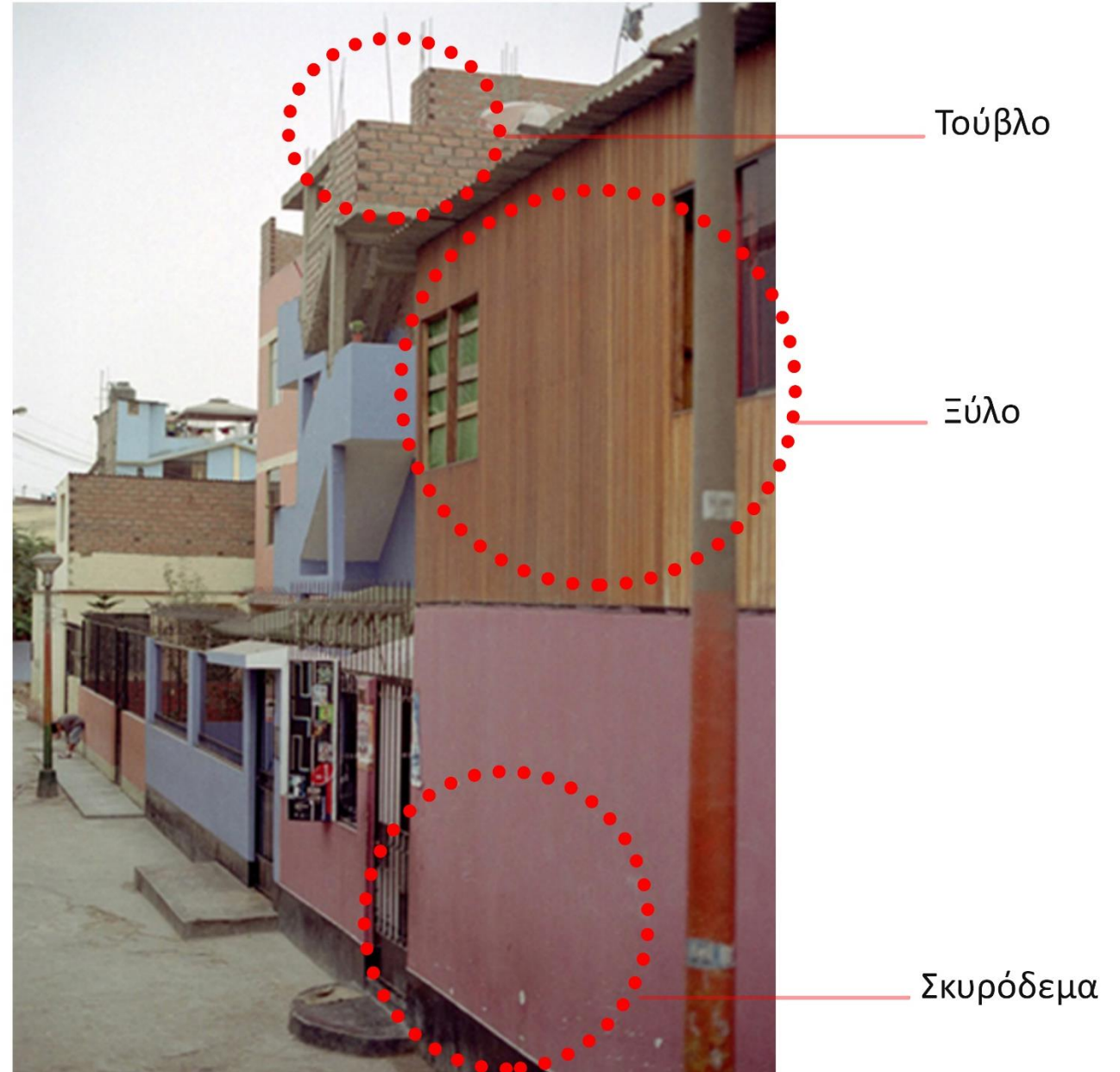
Massive Housing

- Most modern massive residences are high-rising and their design is determined
- PREVI houses don't have many levels, since the intervention by the residents is intended
- PREVI is a base where the residents build on
- «The residences are the beginning, not the ending»



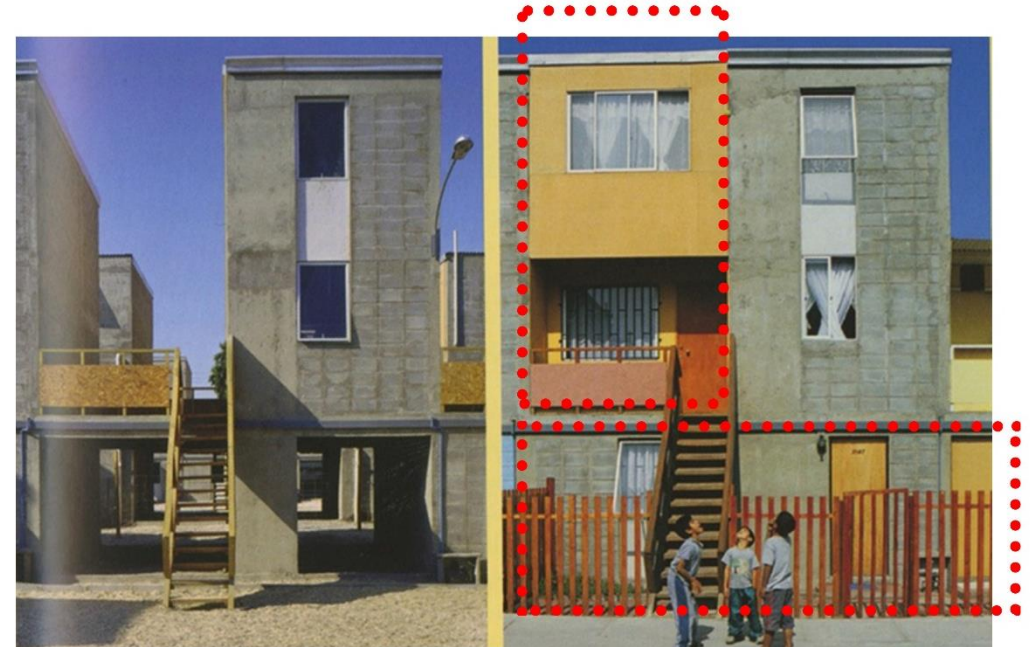
Residential Details

- Different access, materials, collective spaces, light in each residence, since they are designed by different architects
- Materials such as brick, marble and concrete
- Sufficient lighting
- Atrium
- Balcony in each level

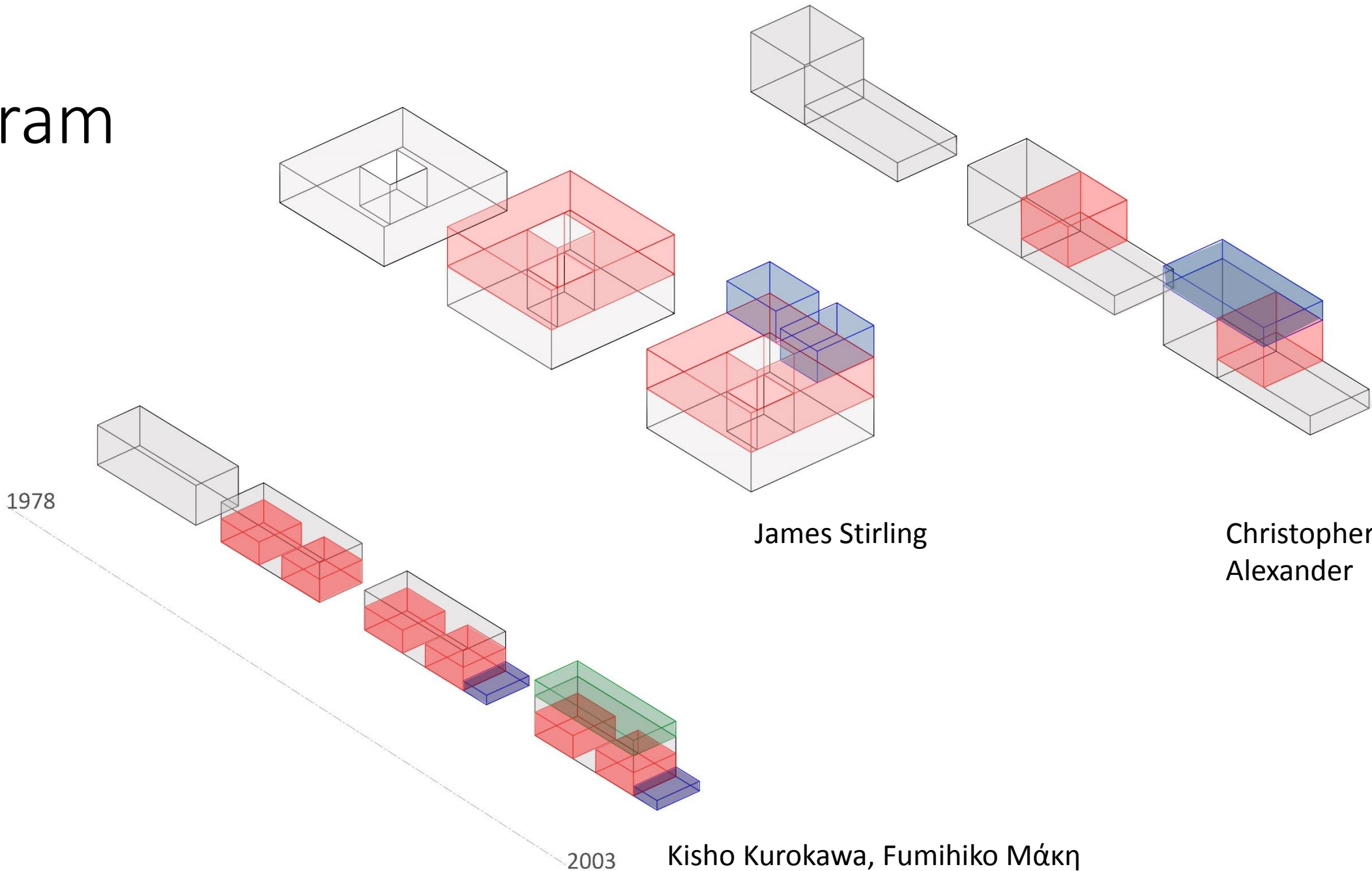


Readability and Adjustments

- Elements connected with certain architects
- Additions by the residents that make the houses unrecognisable
- Adjustments that the architects hadn't predicted



Diagram



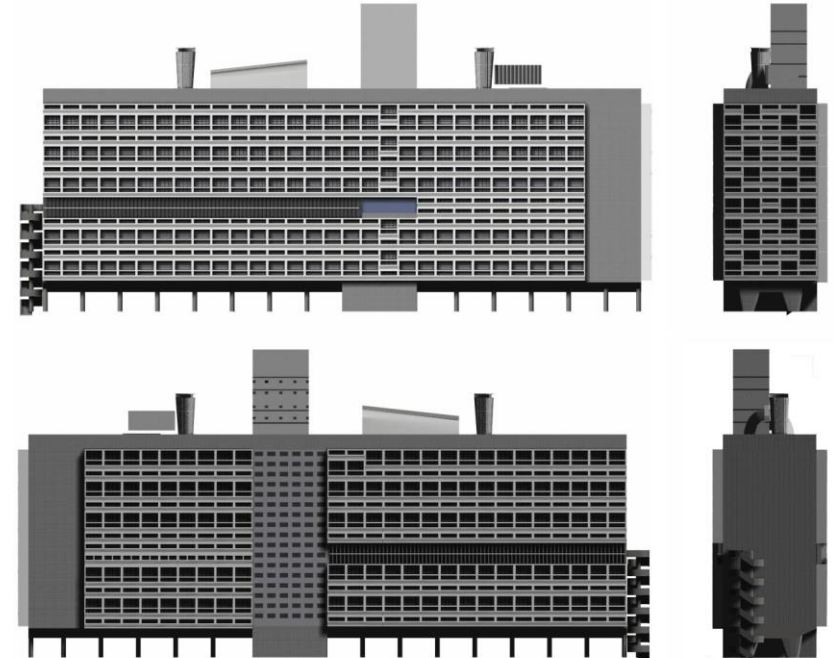
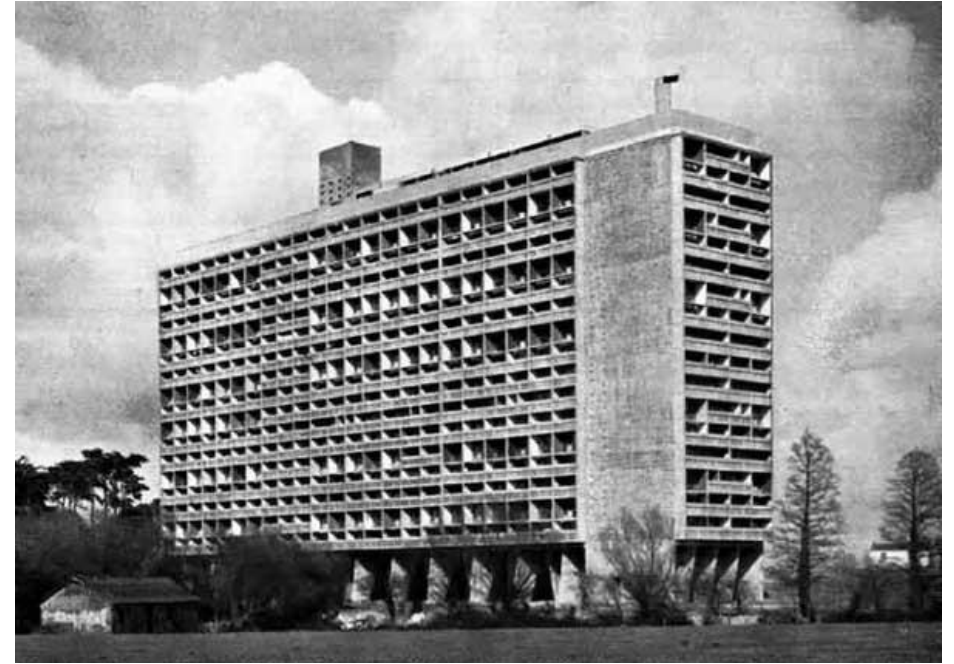
Barriadas

- Residents choose their own environment
- Residents adjust their homes to their needs
- Similar idea to our project



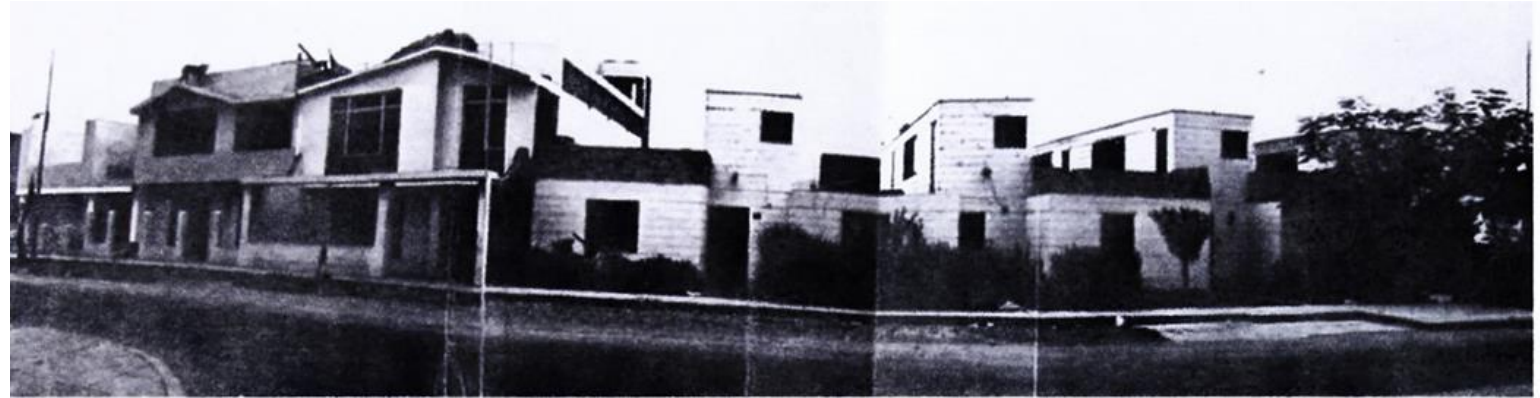
Unite d' Habitation

- Certain dimensions that cover certain needs
- Absolute and determined design
- Contradicts the ideas of this project



Critique

- Some considered the involvement of several architects as a problem
- Some considered that the interventions of the residents were so radical and concluded that the initial idea was weak
- Most of the feedback is positive, since the architects gave liberty to the residents in order to decide their own needs



Top right: original by Kikutake Maki & Kurokawa, 1969 Top left: after urban renovation & restoration, 1985.

Bottom: Modifications and adding of floors by home owners, 2003.



Thank you for your attention.