



(c) Shu He



STEVEN HOLL _ Linked Hybrid

Παναγιώτα Τζιούρρου
Αναστασία Γεωργιάδη
Νίκος Κυριζή

Steven Holl

“I believe architecture is an art, that it changes peoples' lives, and I think that's what architecture has the potential to do,”



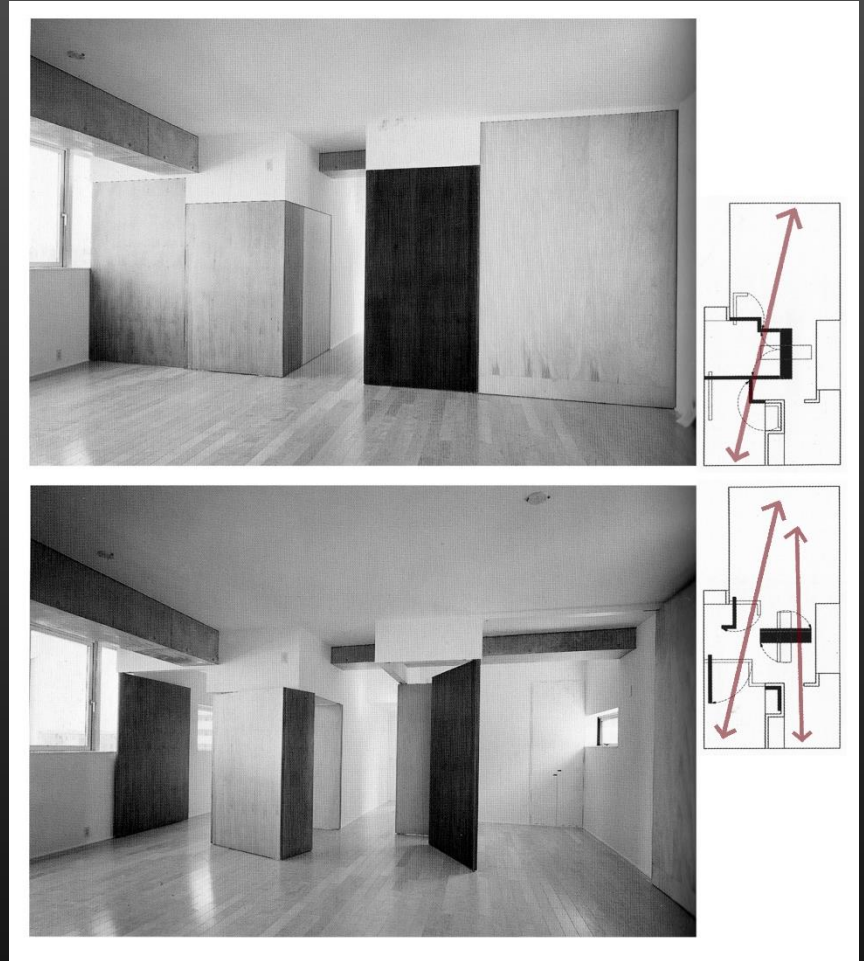
“the soul has more need for the ideal than the real.”

Steven Holl

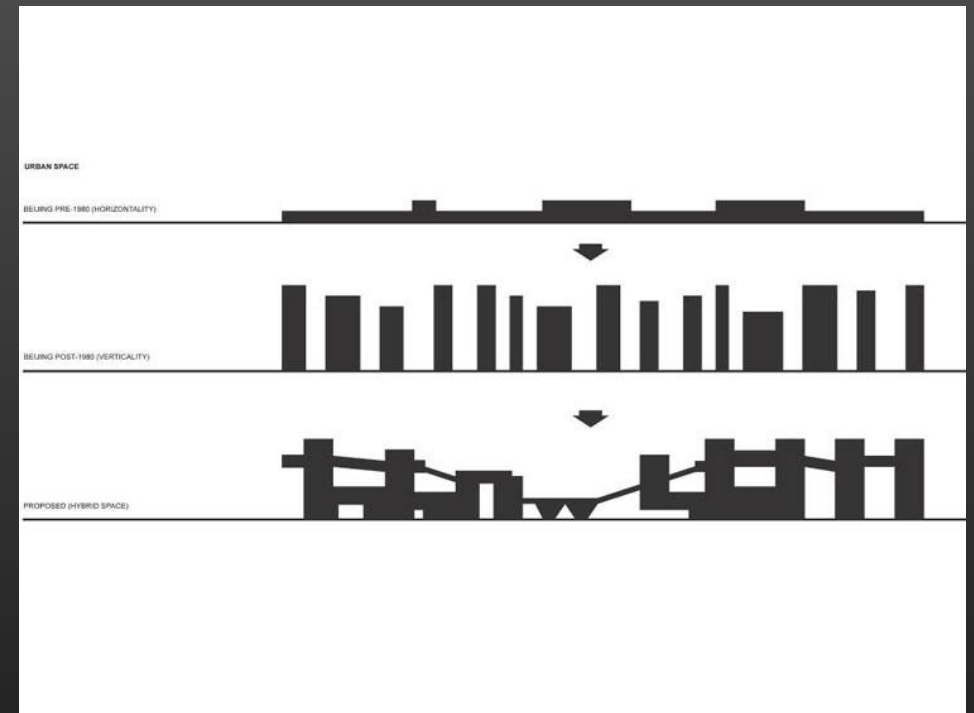


“A modern interpretation of the multi-use concept of traditional Fusuma”.

“Rooms can be added or subtracted accommodating grown-up children leaving or elderly parents moving in”.



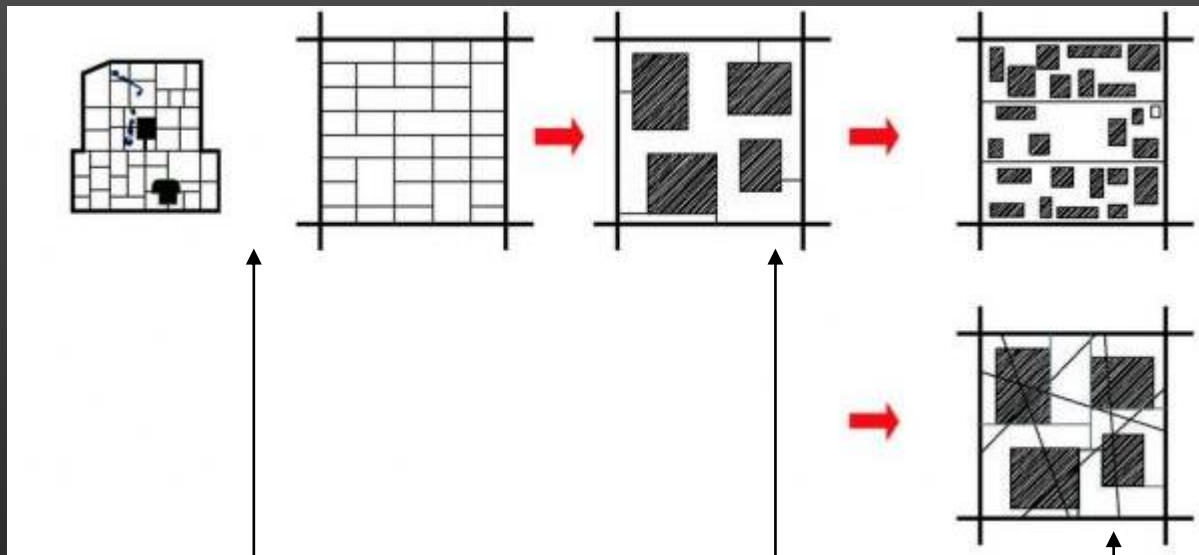
Void Space Housing, Nexus World,
Fukuoka, Japan (1989–91)



“Central location”

“Aims to counter the current privatized urban developments in China by creating a new twenty-first century porous urban space, inviting and open to the public from every side”.

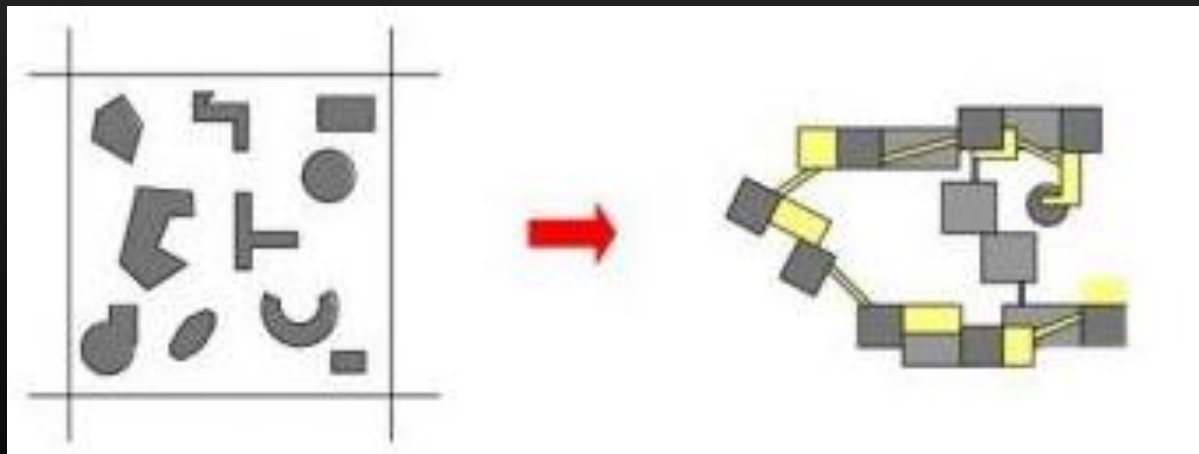
“Open city within a city” - “Porous”



Traditional neighborhood

City of pockets

Alternative



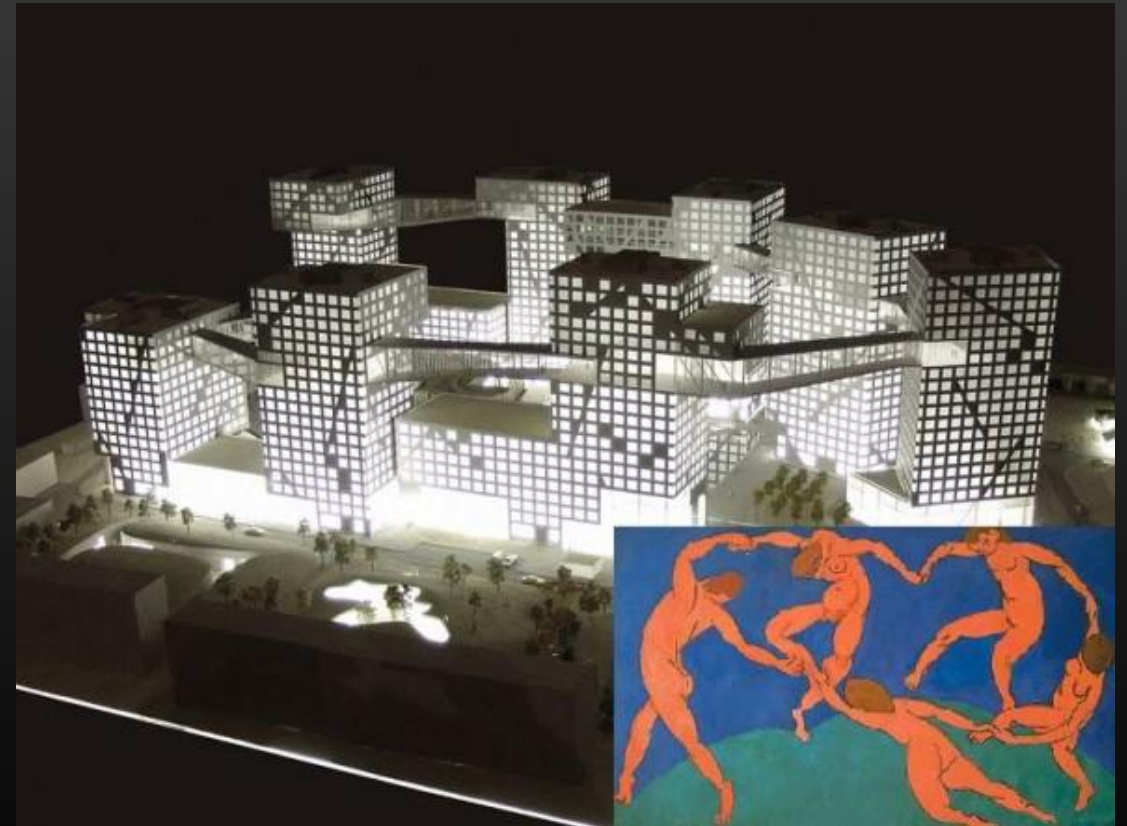
City of objects

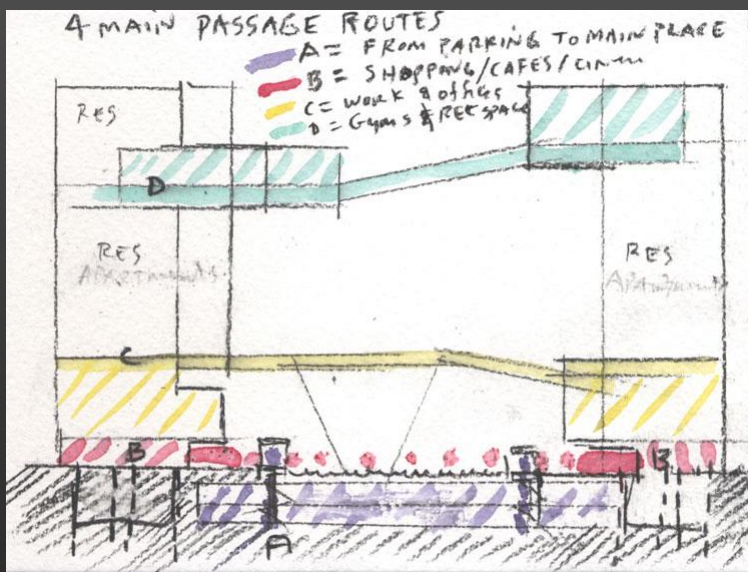
City of spaces

“project concept”

“This project offers a new urban model for Beijing”

“collectivity”

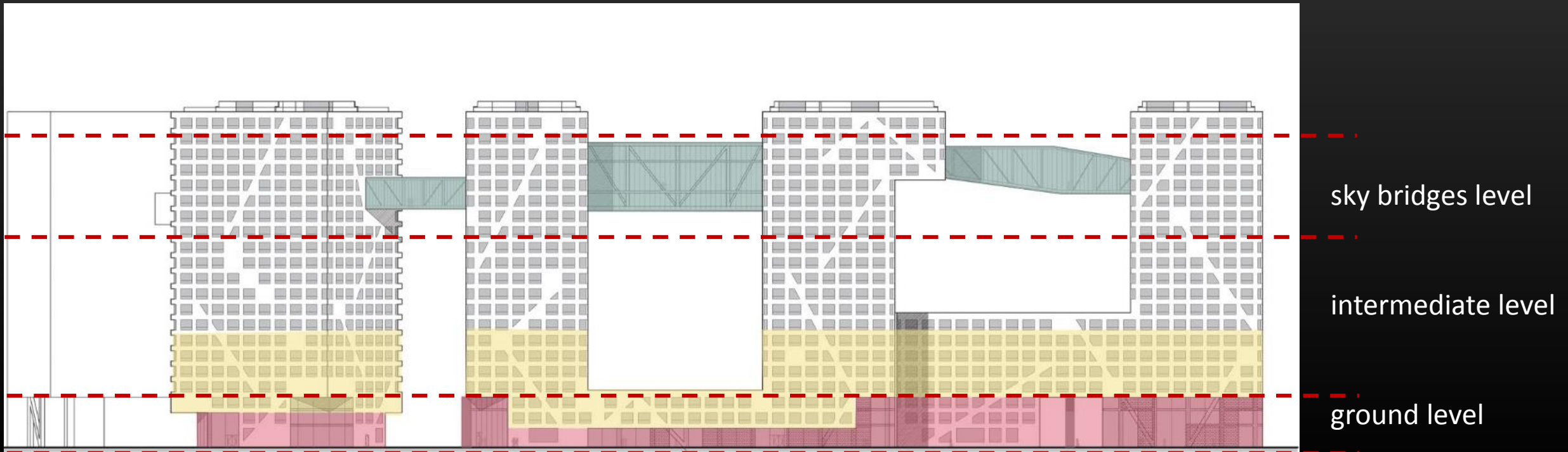




The top level of the towers **private** roof gardens are connected to the penthouses

The intermediate level of the lower buildings, **public** roofs gardens offer tranquil.

The ground level offers a number of open passages for all people.



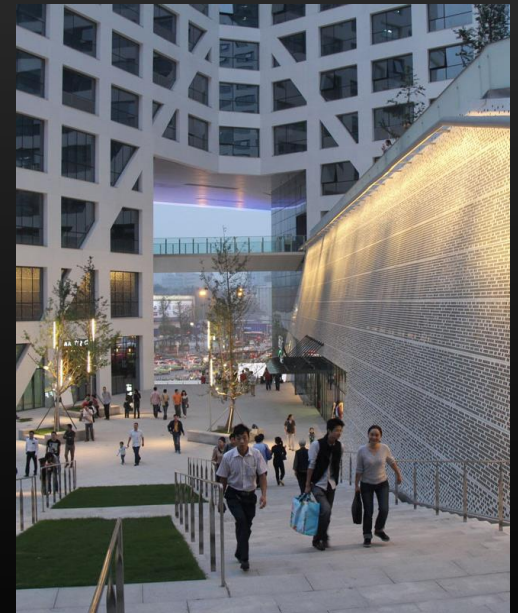
Ground level



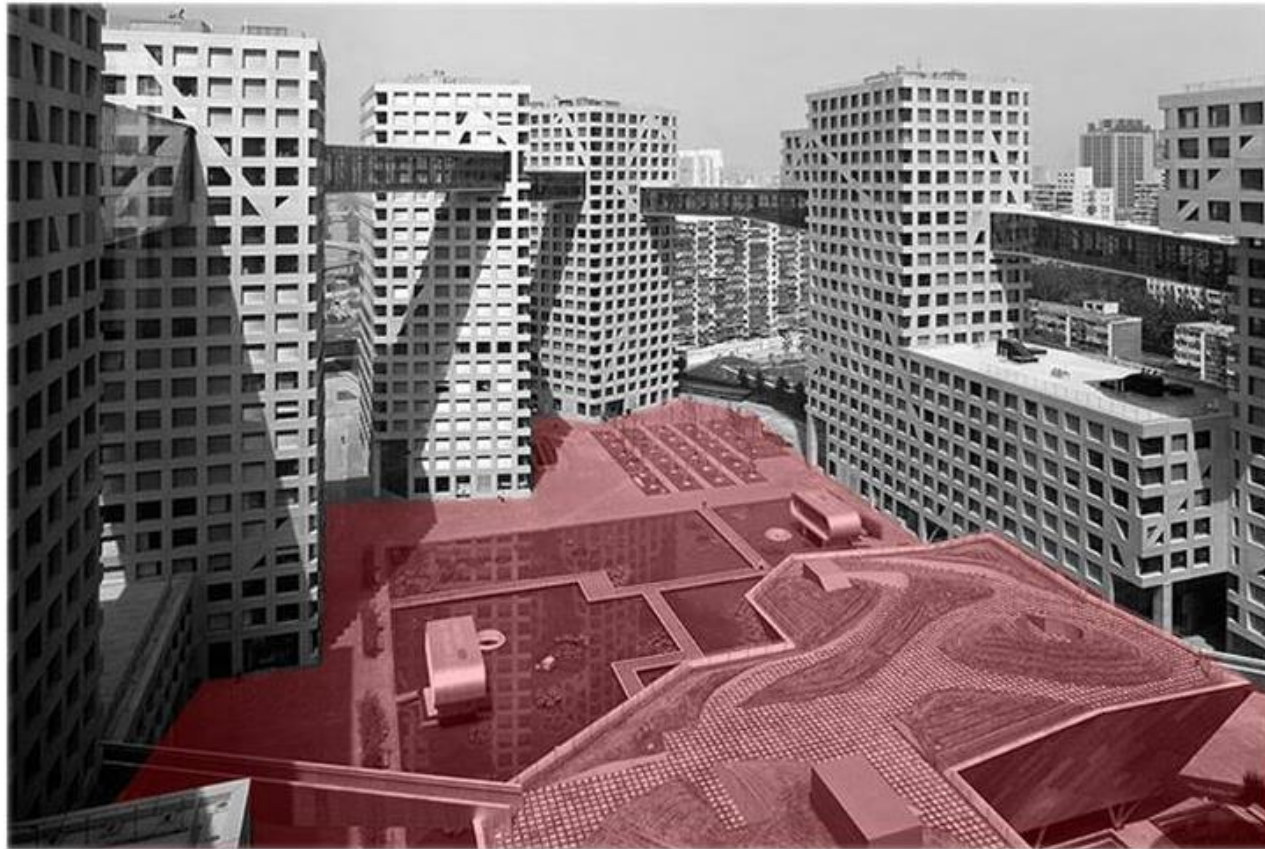
“Urban porosity – able to walk to all the functions of the base”

“In the spirit of pedestrian”

“24 hour urban life- multi functional “



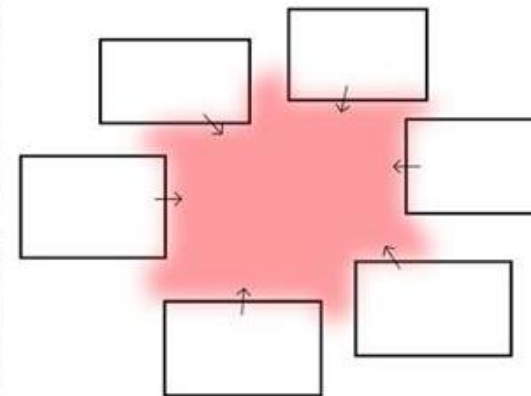
All public functions on the ground level have connections with the green spaces surrounding and penetrating the project.



in between space

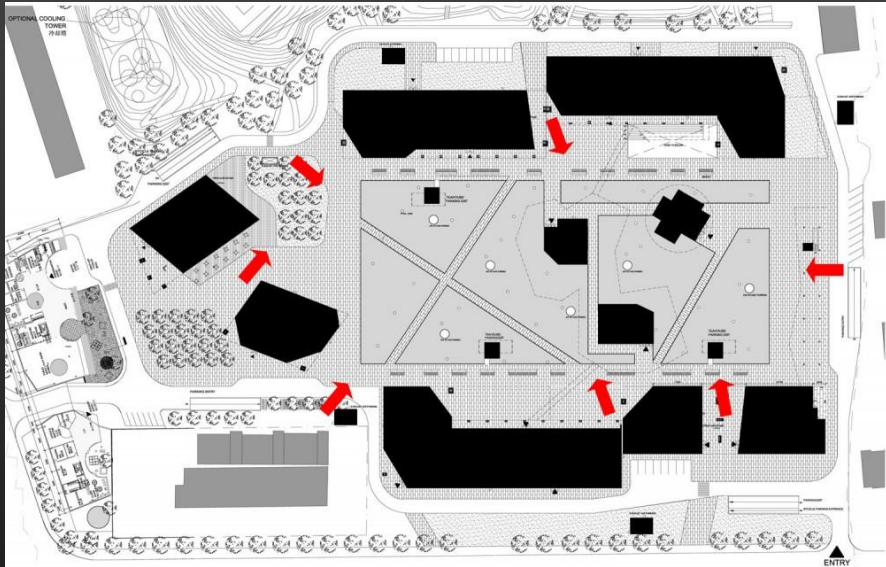


Public green space



Lake - Nature - Sharing

Accessibility



For all people

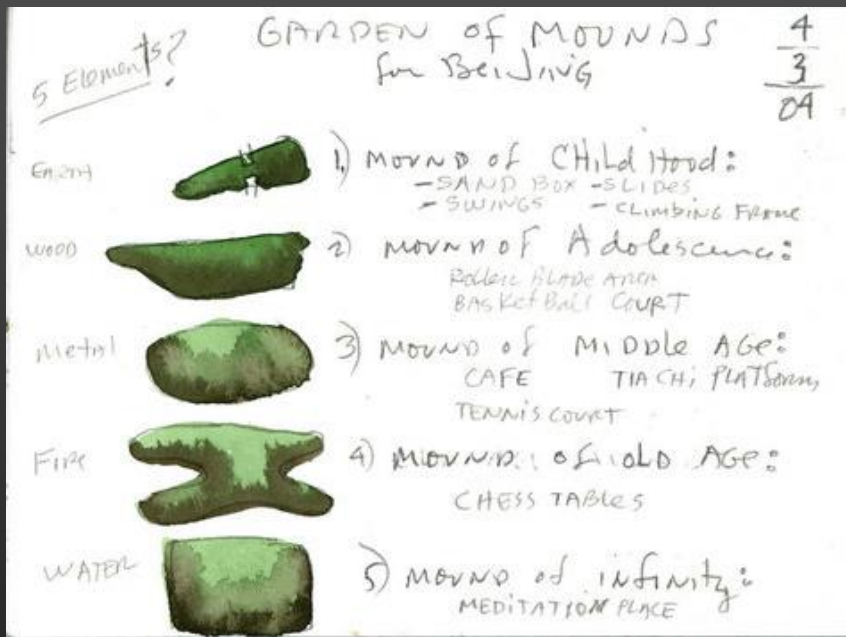


Cinema- becomes a place of gathering



Becomes an emblem
Forms a "central park"





Landscape - related to cycle of life

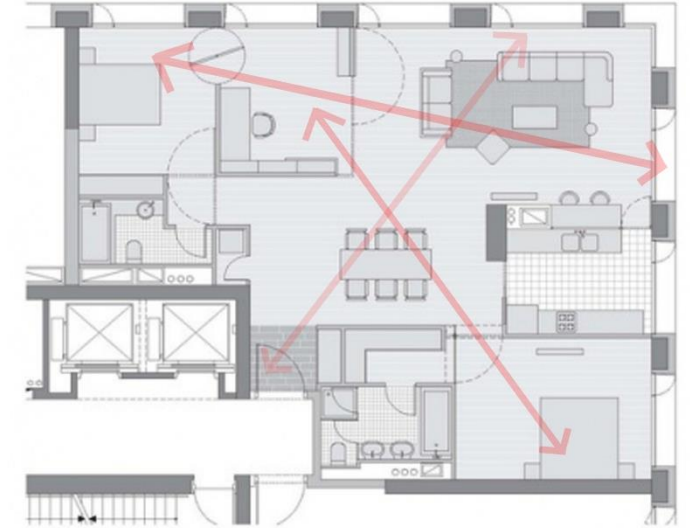
Each ones of the mounds has programmatic activities-
cycled through time and life

All landscape aspects are part of sustainability attitudes



Intermediate level

“I don’t call it a detail, I call it a new type of domestic space, the 21th century needs domestic spaces”



Closed door – privacy

Opened door – connect across perspectives, new feeling of interior

Roof garden



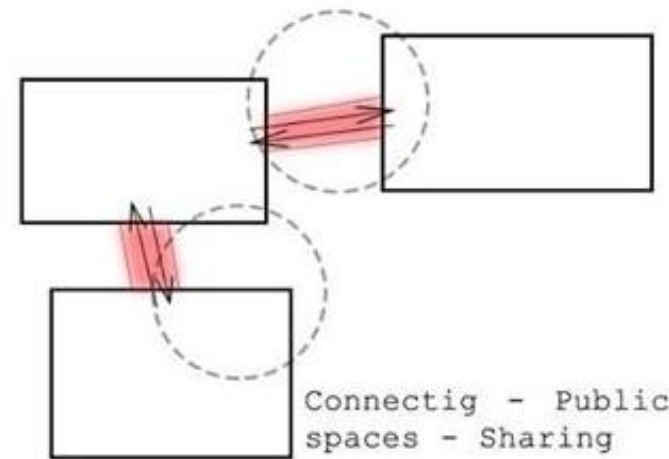
limited access only for residents

semi-public space

Sky bridges level

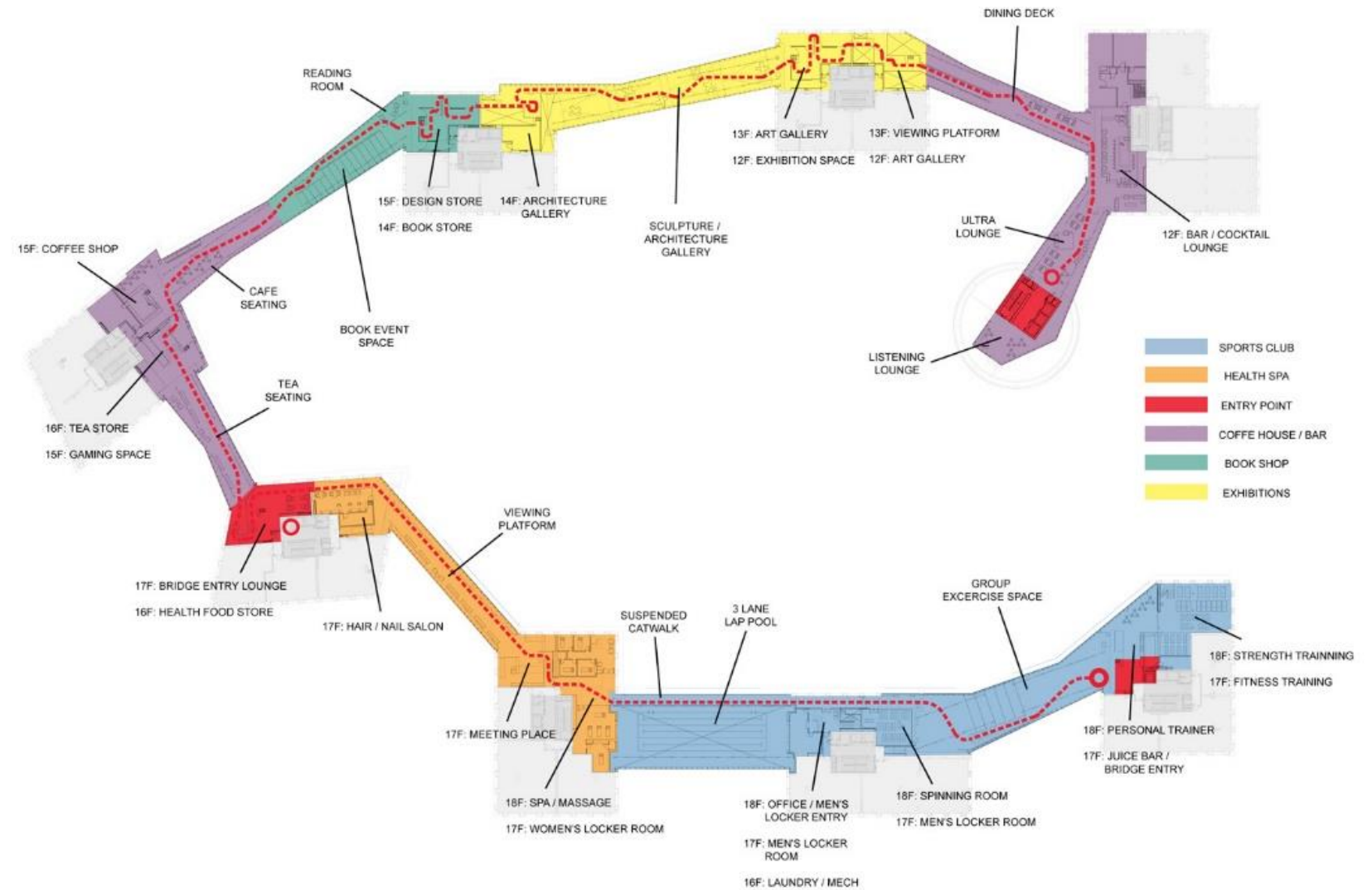


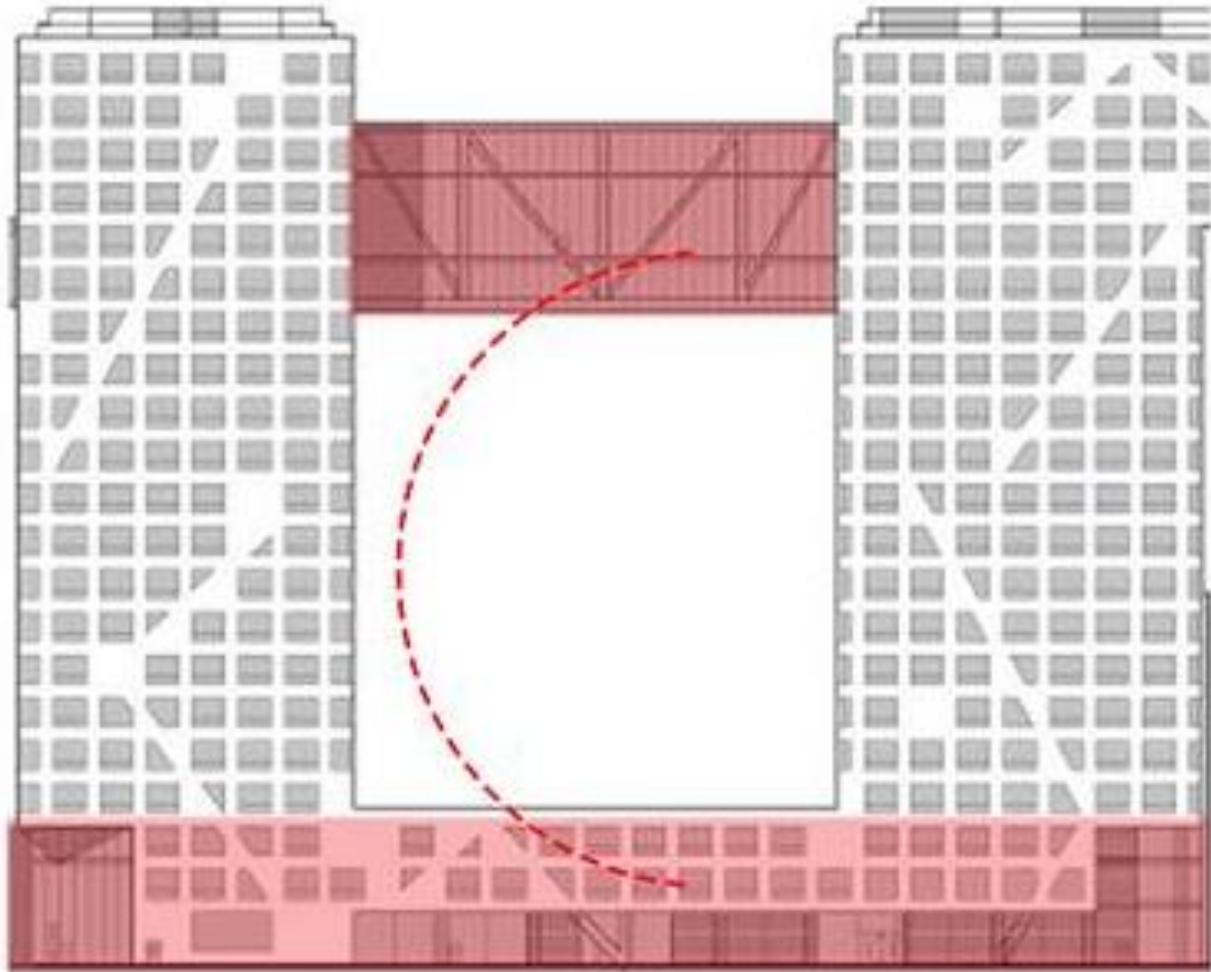
Commercial zones



“A multi-functional series of skybridges with a swimming pool, a fitness room, a café, a gallery, auditorium and a mini salon connects the eight residential towers and the hotel tower, and offers spectacular views over the unfolding city”.

“We created a porous place that invites people inside”



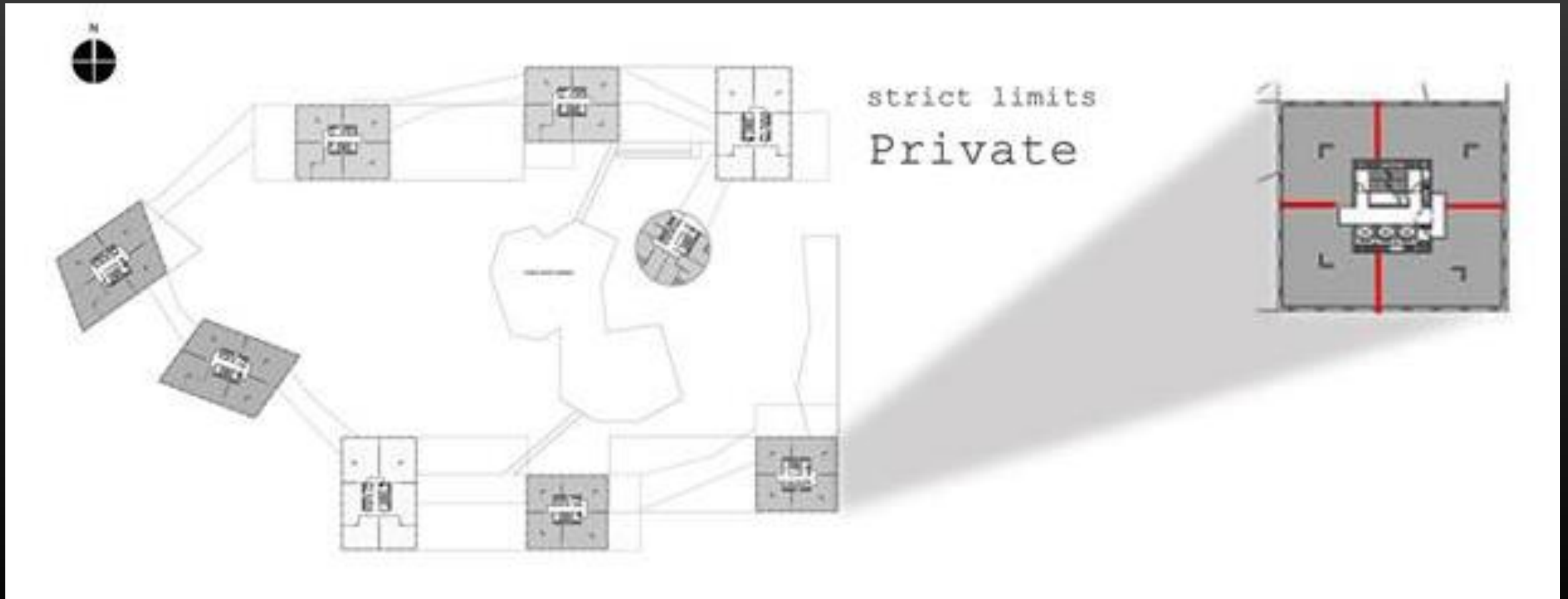


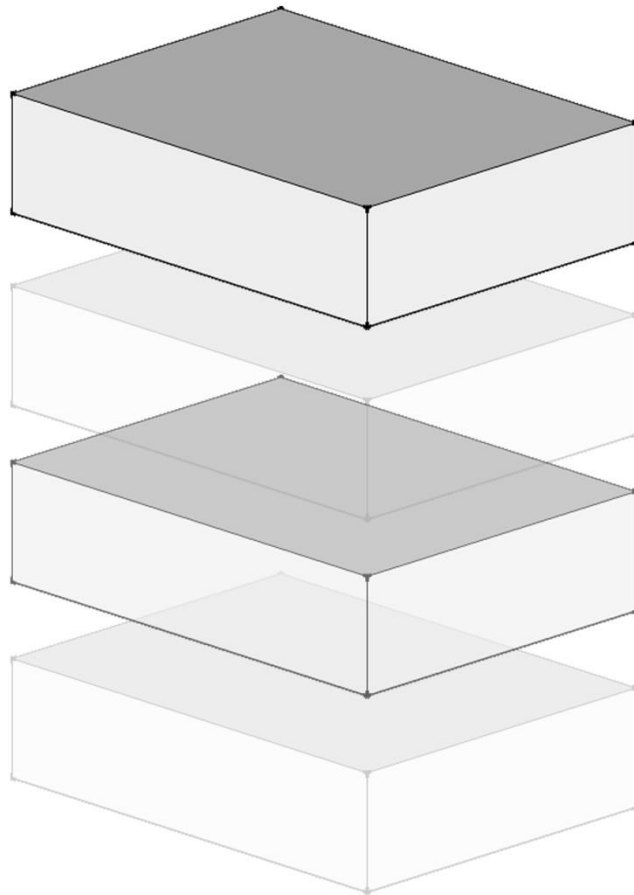
Public space



Top level

“private roof gardens are connected to the penthouses”



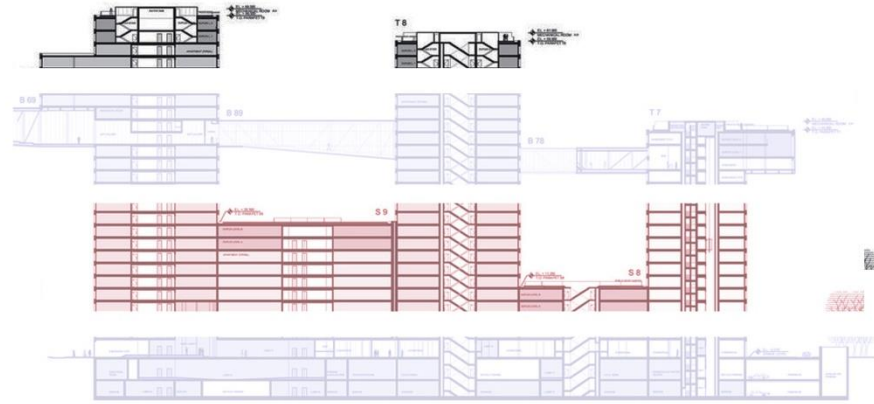


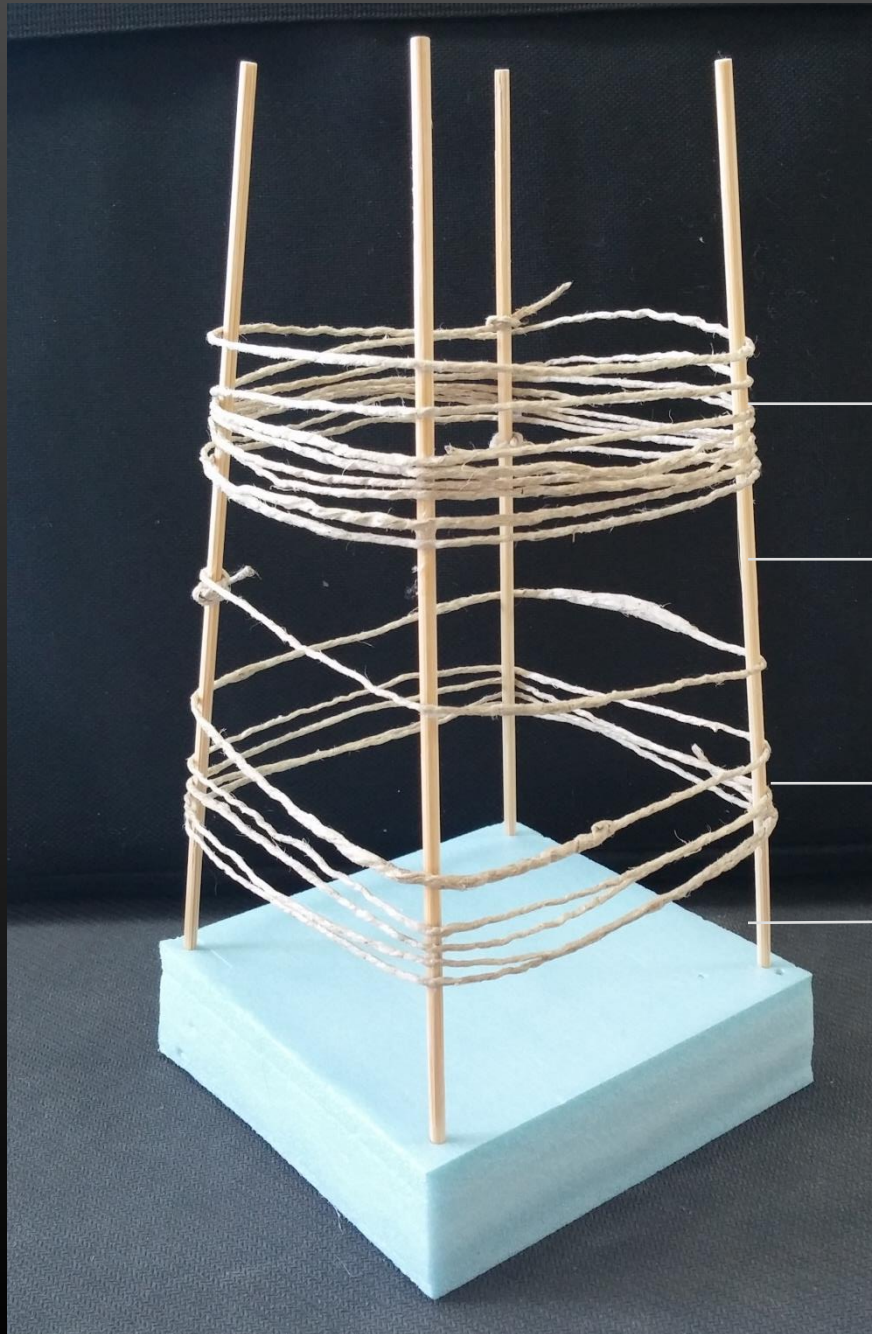
Private_penthouses roofs

Public

Semi-Public_Residents

Public





→ Private

→ Public

→ Semi-Public

→ Public

Multi functional _ Porous urban space

