

*House Na

Sou Fujimoto

Ioanna Hadjipieri
Kiriaki Christodoulou
Evangelia Demetriou

Sou Fujimoto-House Na



Born in Hokkaido in 1971

He graduated from the University of Tokyo in 1994

Established his own office in 2000

Location: Tokyo, Japan

Site Area: 592 square-feet

Project Area: 914 square-feet

Project Year: October 2010

Designed for a working couple in their forties



*Japanese tradition

"I am very interested in traditional Japanese architecture, not as an image, but in the basic concept of space. The traditional Japanese architecture has not a strong wall, but many thin walls or layers to control distance from inside and outside, to protect or to open".

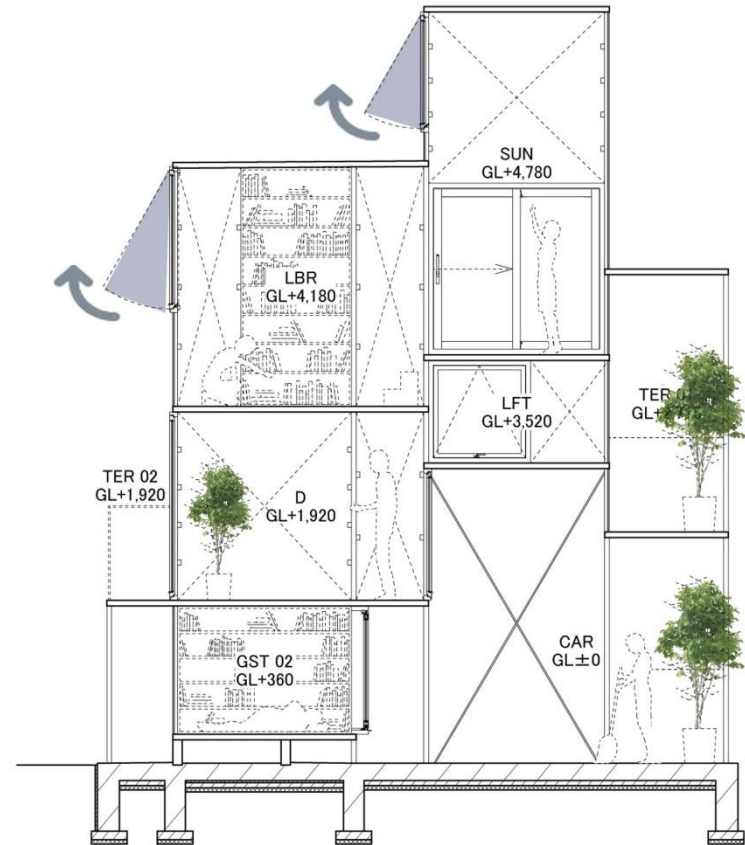


*environmental awareness

Green usage

strategically placed fenestration

natural ventilation



tree-like house

Nomads

Elevation difference

Source of activities

"I have been thinking about the architecture of the future as an artificial forest, and I mean literally a forest. I think the forest is very interesting because many different things exist together, in a complex order, and create a certain harmony[...]. Architecture should accept the diverse activities of a city".



like leaves of a tree

filtering

lighting

shading



*structure

thin steel frame

in-floor heating

Strategically placed glass panes

private rooms at the northern part



*Video

description of the house

<https://www.youtube.com/watch?v=zbkpgWLsAxs>

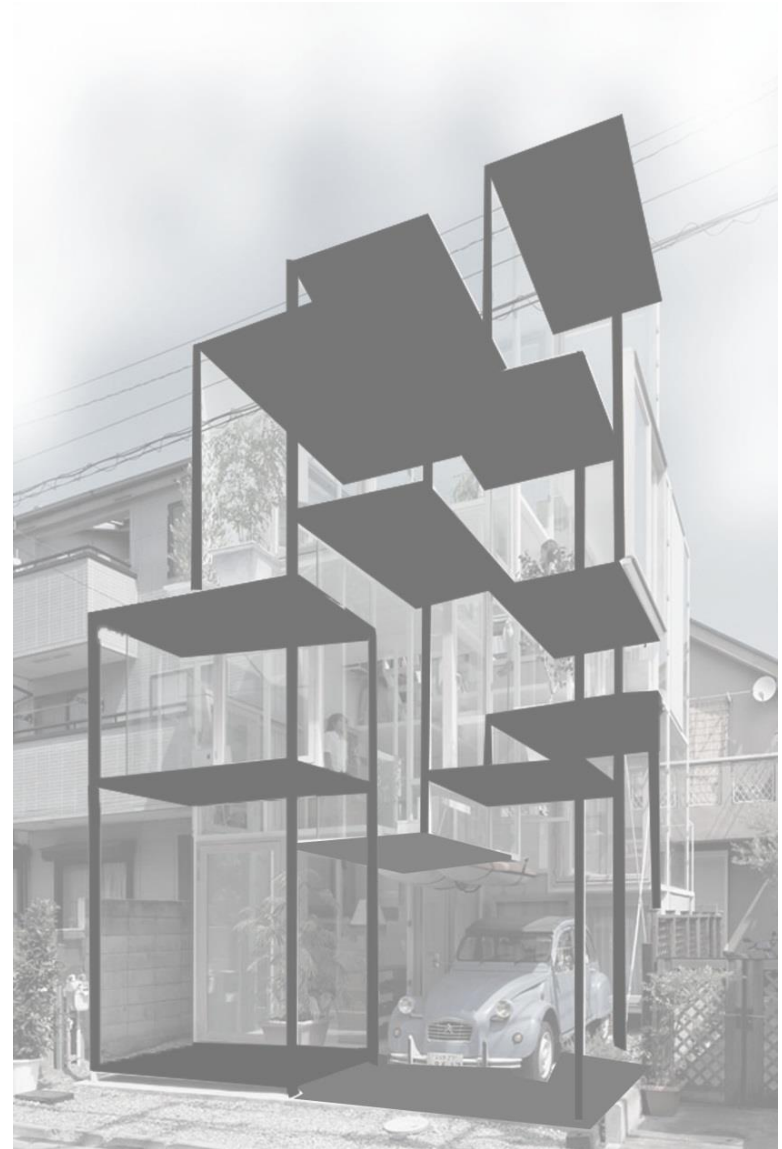
*levels

21 individual floor plates

different heights

3 basic floors

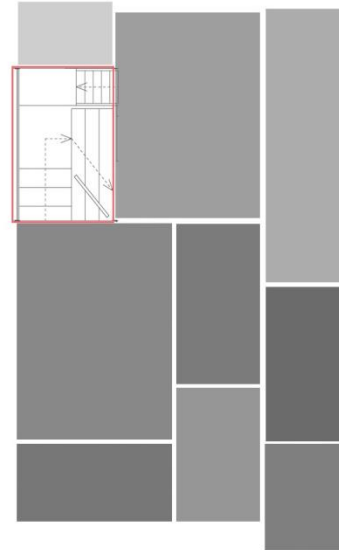
plate ranging in size 18-21 s.f.



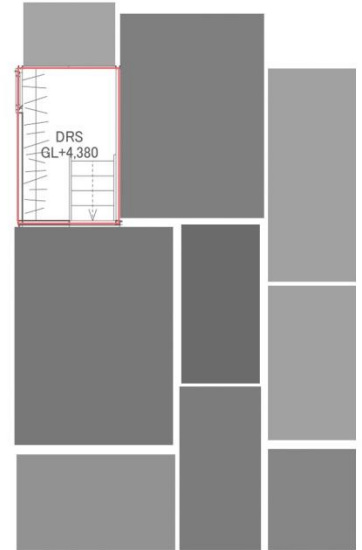
"a unity of separation and coherence"

range of activities at different scales

fixed and movable steps



Second floor



Third floor



*adaptability

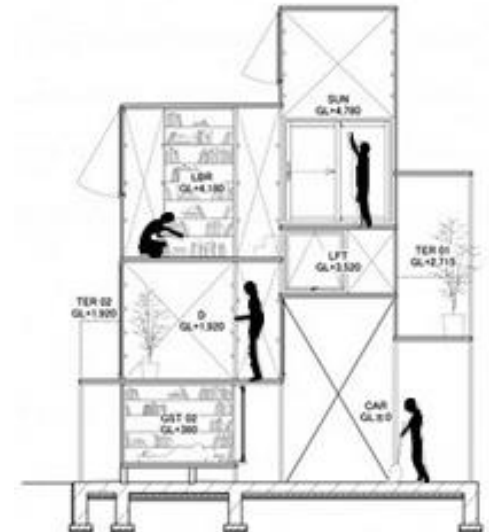
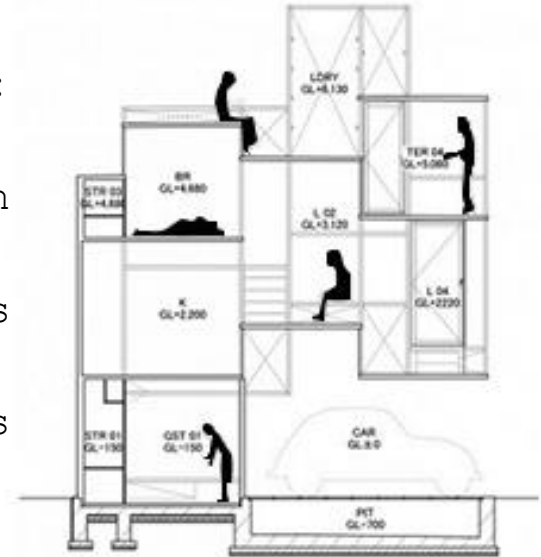
floor plates at a furniture-like scale can provide:

Circulation

Seating areas

Working areas

various activities at different levels

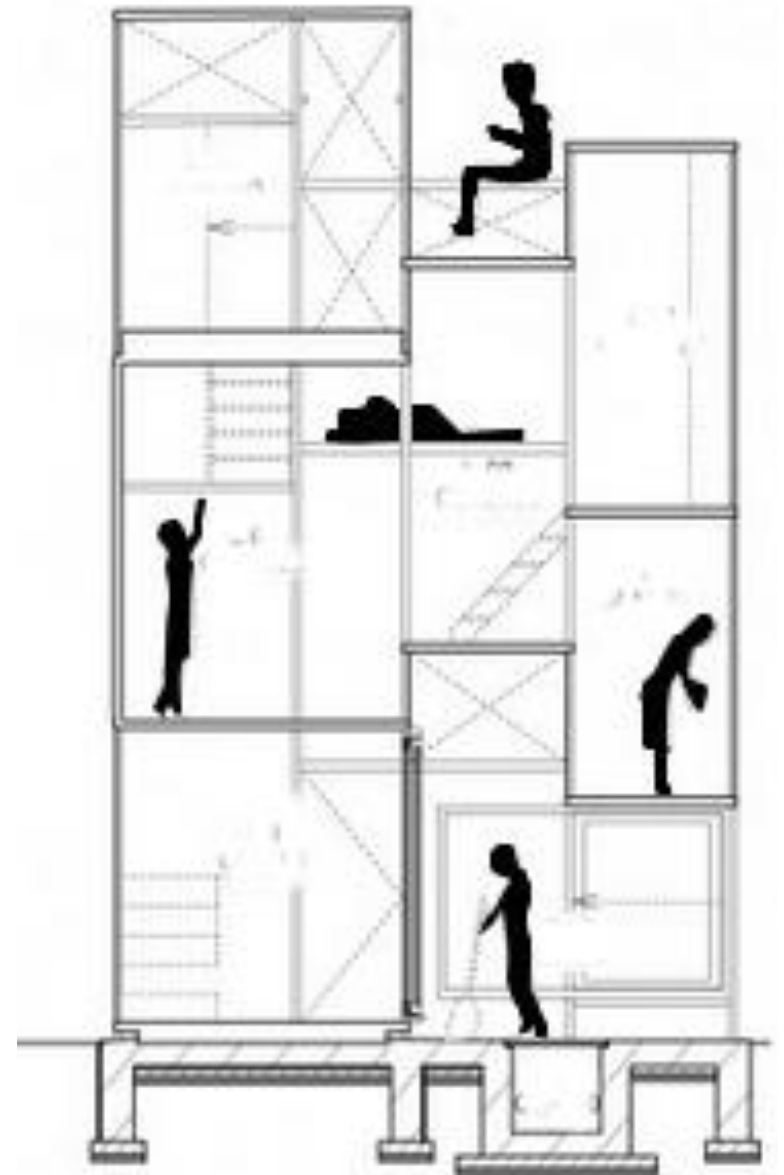


loosely defined program

no specifically defined function



Japanese custom of sitting and sleeping on the floor



transforming floor plates to working
and seating areas



furniture —————> room —————> house —————> city

*limits

verticality

the house fully the site

50 cm less than the adjacent building

no front yard-garden



*sunshine

Large oversized **glass windows**, allowing light to pour into the home



protection of privacy inside and outside
use of curtains



*Visual contact

transparency and visual continuity

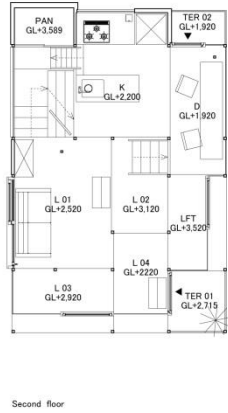
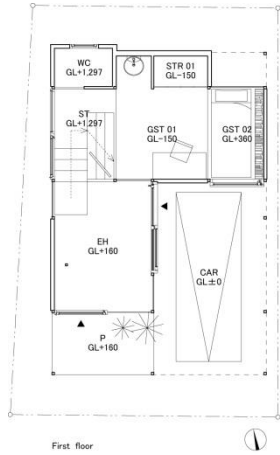
visibility from the outside to inside of
the house

communication between the residents

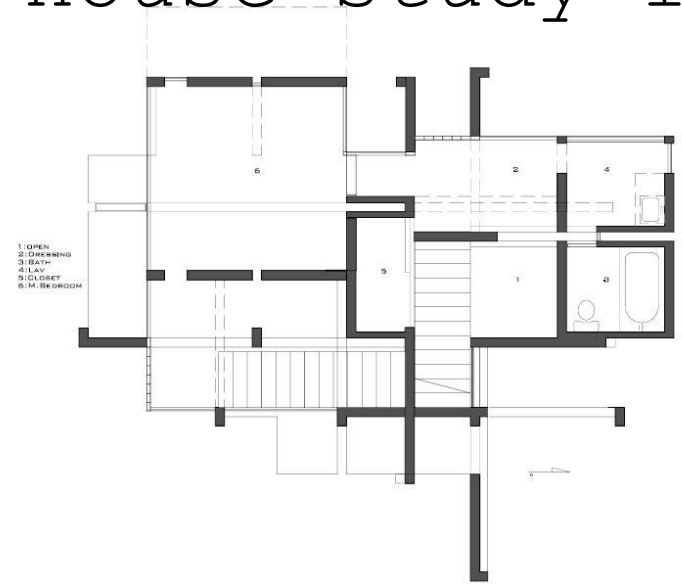




House Na



House study IV



*Thank you