



Adalberto Libera's Villa Malaparte

Σύνθεση IV

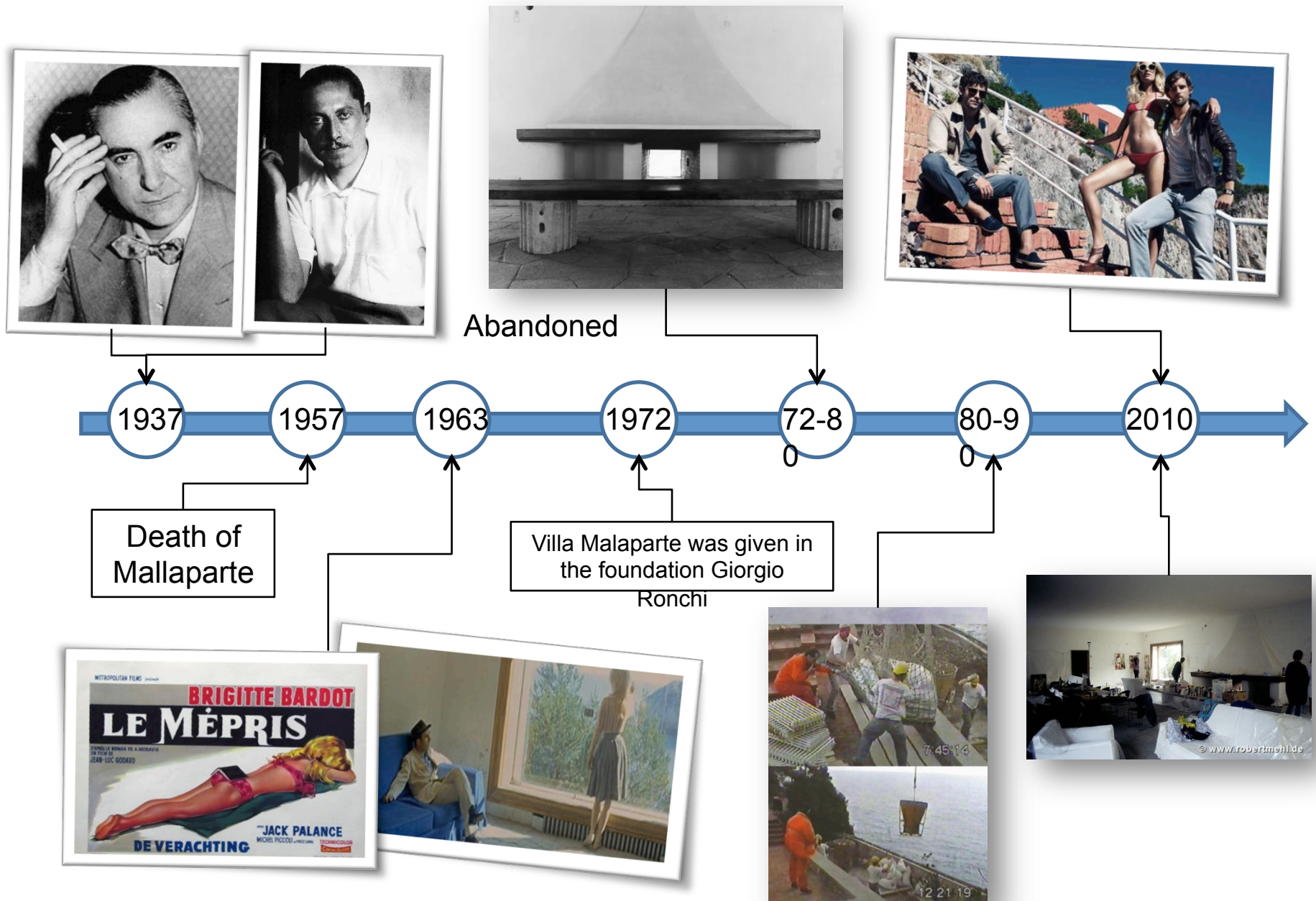
Μαριάννα Τσαγγάρη, Παύλος Πολυβίου, Άντρια Χαριλάου

General Information

- Villa Malaparte is a house located in the east side of Capri island in Italy.
- Designed in 1937 from the architect Adalberto Libera for Courtsio Malaparte who at the end rejected Libera's design and the house by his self with the help of Adolfo Amitrano.
- It is one of the most exemplary and characteristic examples of the Italian modernist era

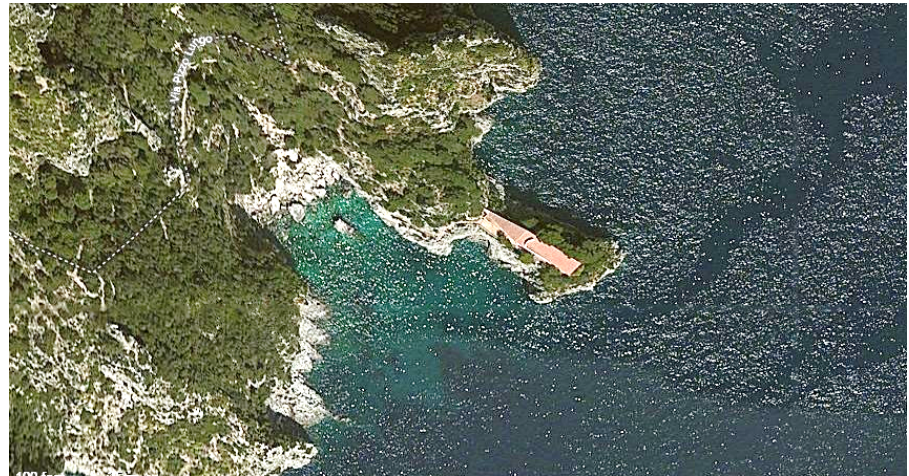
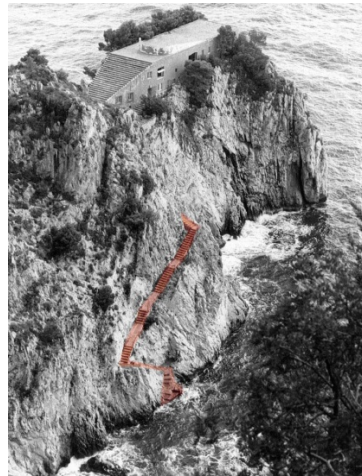


Timeline of Villa Mallaparte



Accessibility

- You can reach the house either by walking from the city of Capri or with boat followed by carved steps in the rock

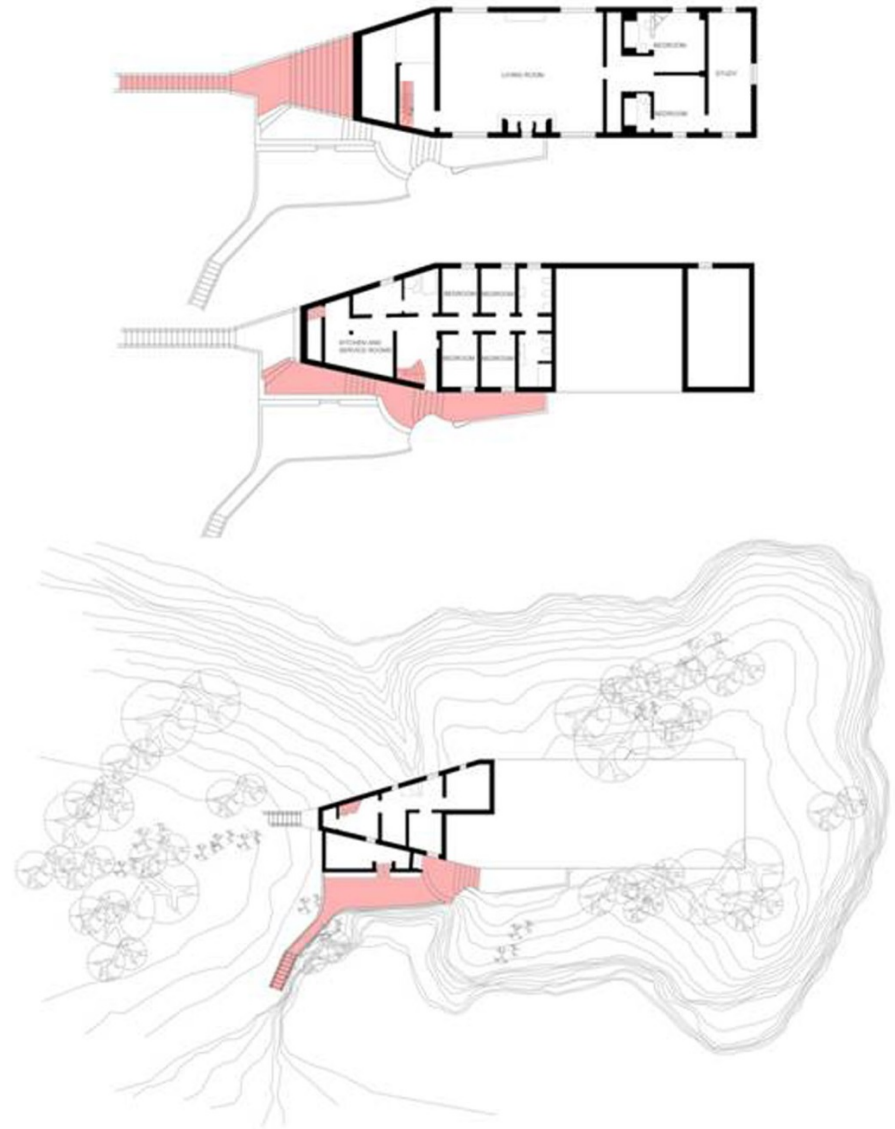


Accessibility from the town

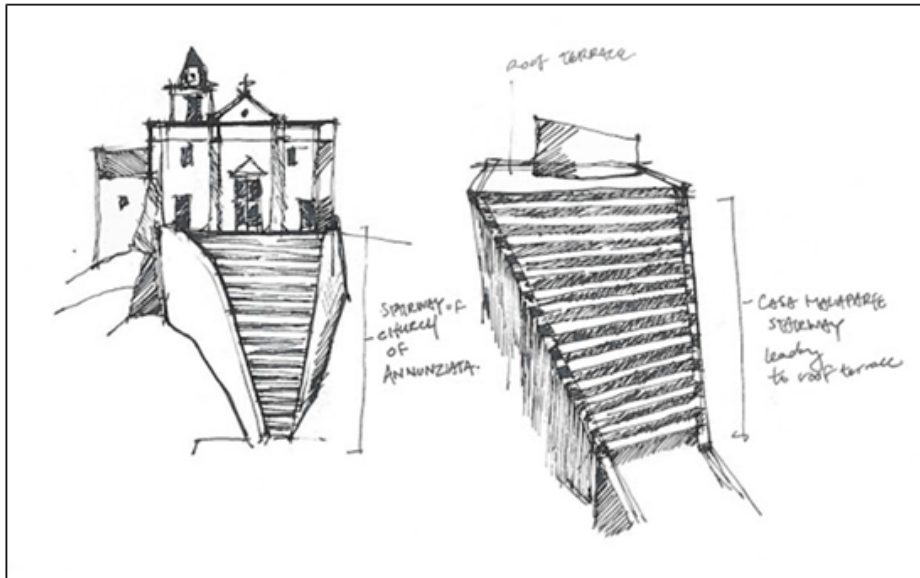
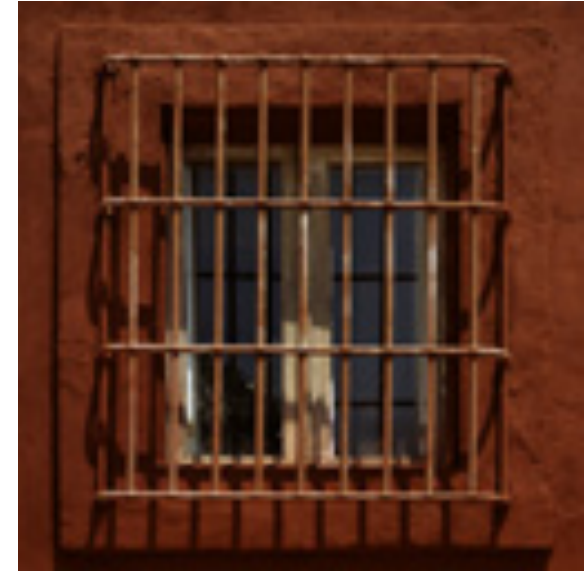
Accessibility from the sea

This picture shows that this house was isolated, which was asked from the user of the house, because he was in jail

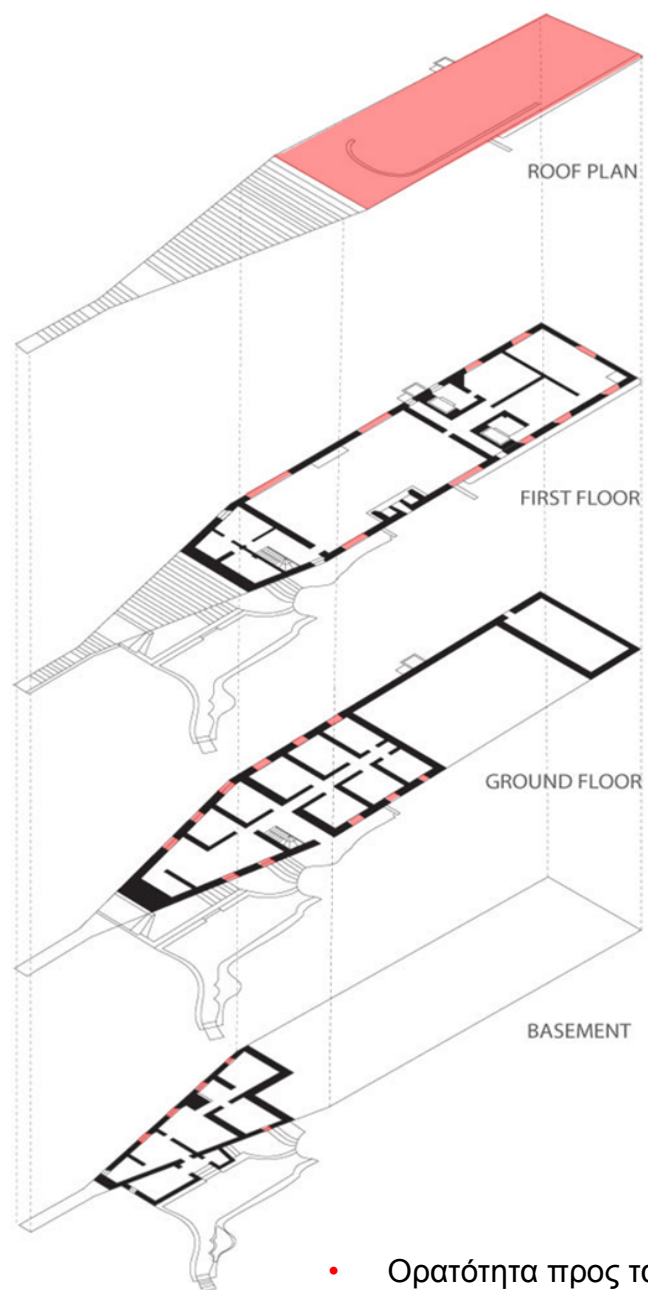
Accessibility in the house



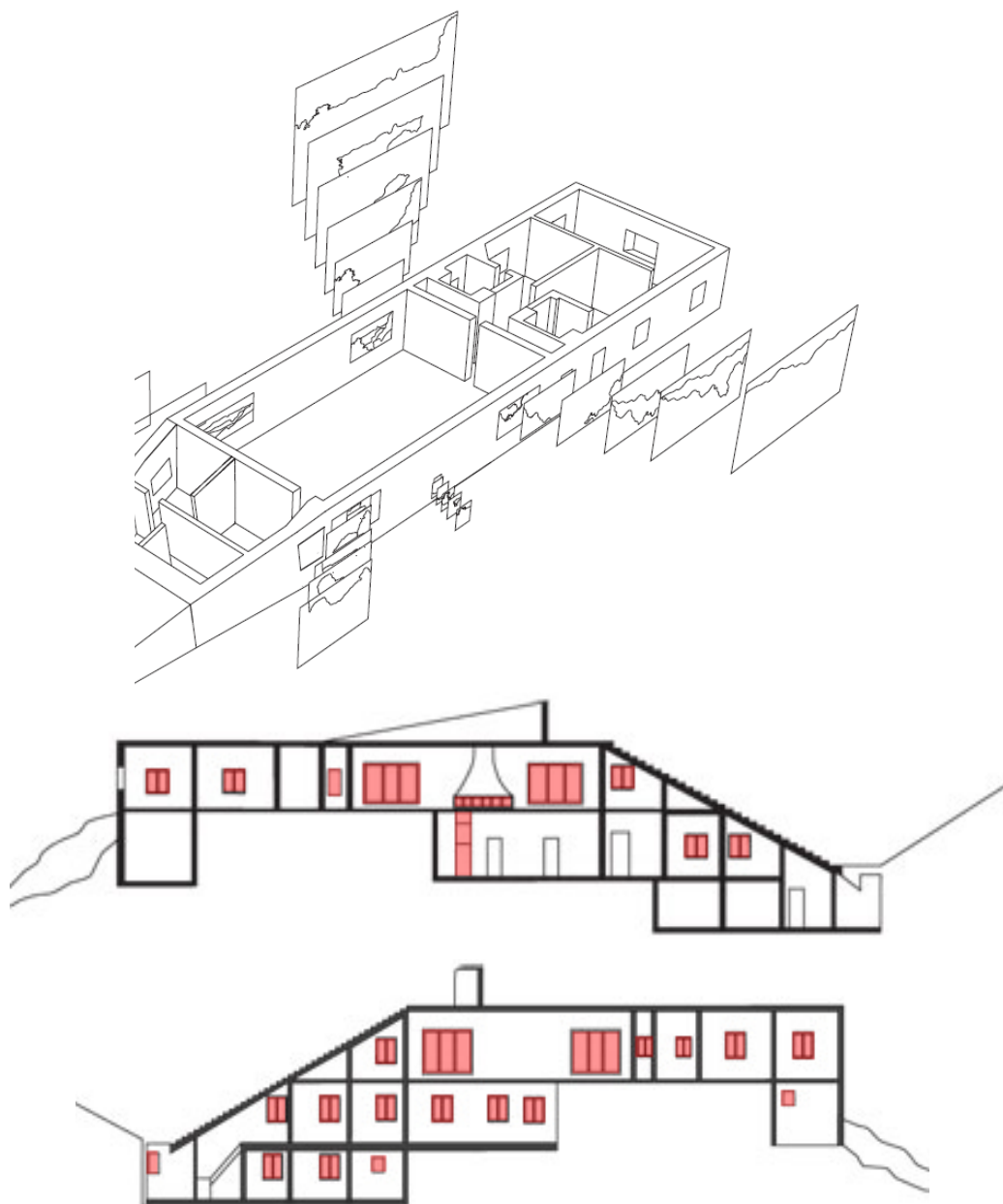
Η σκάλα που οδηγεί στην ταράτσα



- Κάποια παράθυρα στο κτίριο είχαν την πιο πάνω μορφή λόγω του ότι ο Μαλαπάρτε πέρασε κάποια χρόνια της ζωής του στην φυλακή.
- Εμπνευσμένη από την σκάλα μπροστά από την εκκλησία της Annunziata στο Λίπαρι, το νησί στο οποίο ο Μαλαπάρτε φυλακίστηκε το 1934.



• Ορατότητα προς τα έξω





- Casa Malaparte incorporates the nature. It does this with the huge size windows with frames reminiscent of paintings where the outside become part of the interior

Interior



- Malaparte designed also the furniture of the building using fragments of classical architecture of columns and large tree trunks .

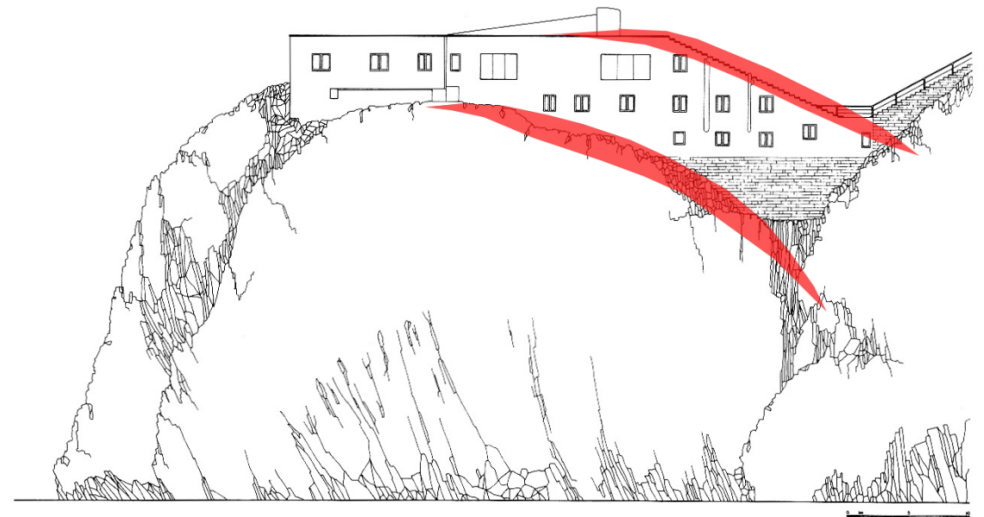
Integration in the landscape

Steep cliff 33 meters

Nearest building in 300 meters → I does not need to match with other buildings

By following the curve of the rock on which is built

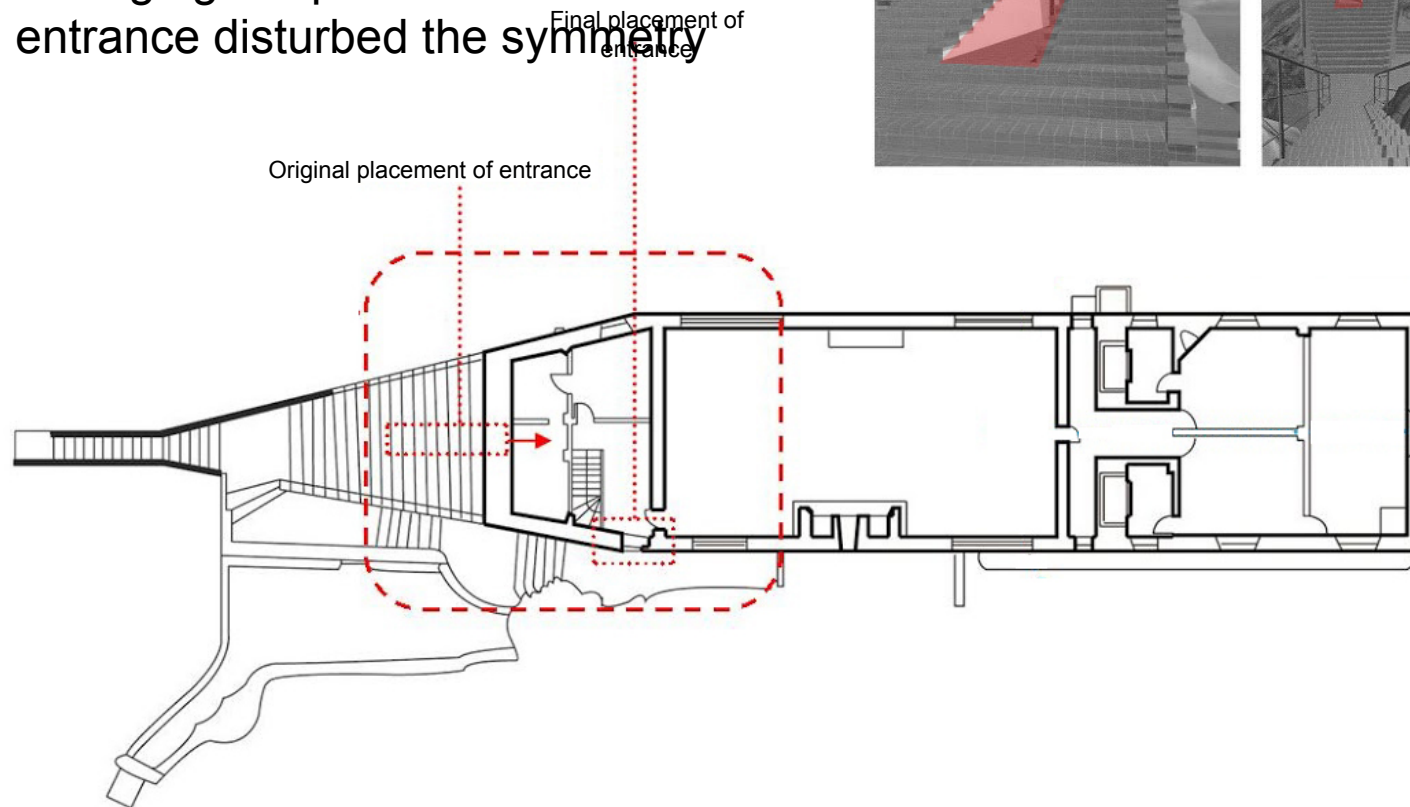
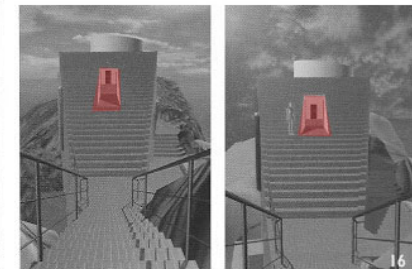
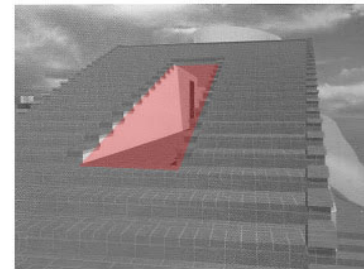
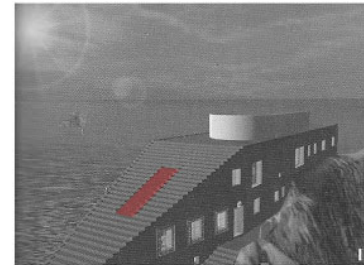
Materials: local stone Red → contrast with the color of the rocks and the blue sea



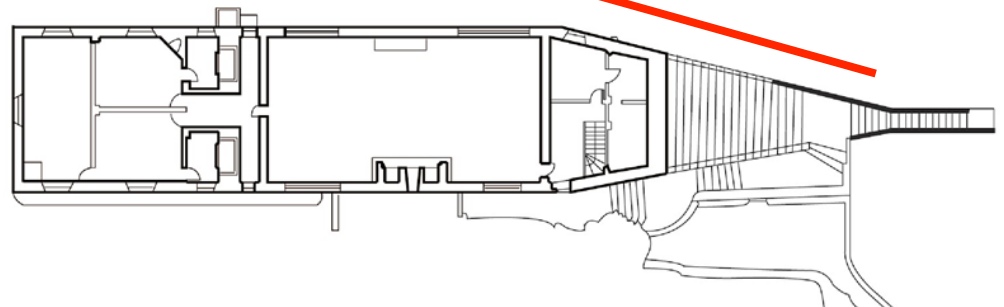
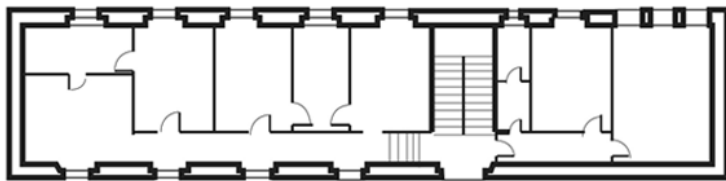
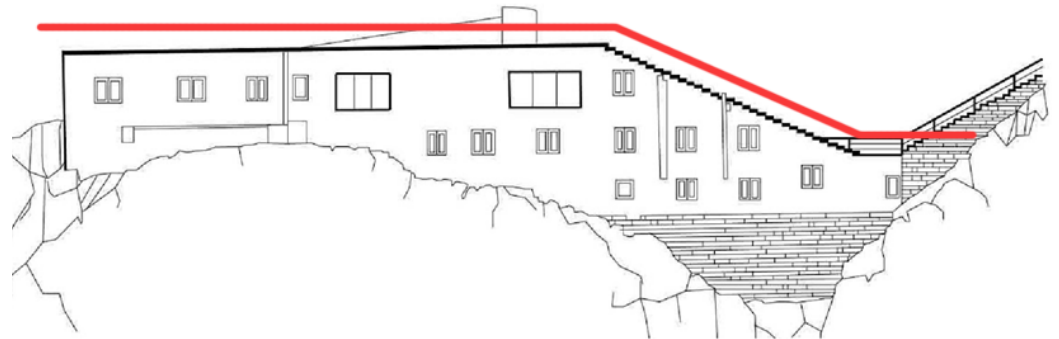
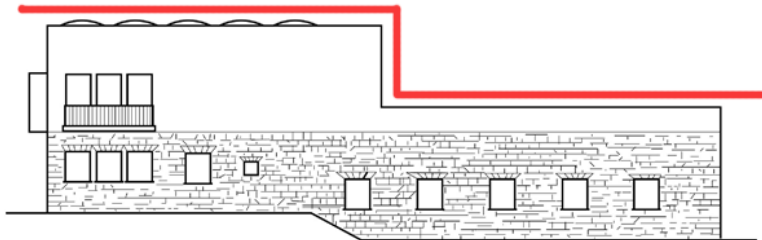
Prospetto nord-est.

Stairs to the roof

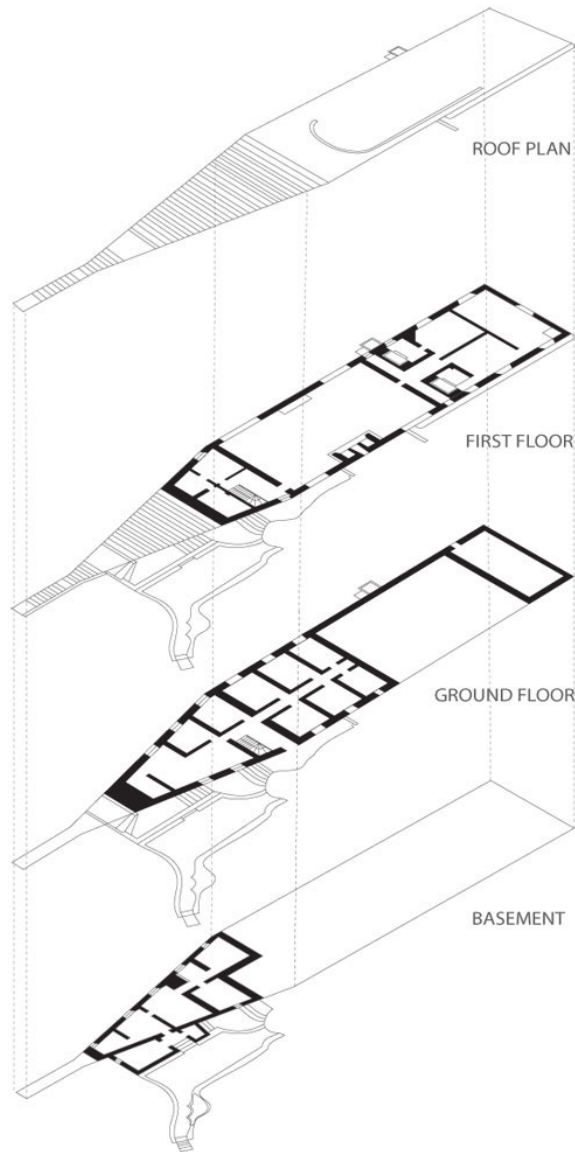
- Main access entrance in the middle of high beam due to aesthetic practices the staircase was moved inside of the house. Changing the position of the entrance disturbed the symmetry



Libera	Mallaparte
The rooms aligned along a corridor Evenly aligned windows	Scattered
conventional Design	Seemingly randomly arranged (large and small windows with bars)
	Mirrors personality



Floor Analysis



On the roof there is a large terrace and a staircase which is perfectly adapted to this part of the rock and resembles an inverted pyramid.

The first floor houses the master bedrooms of which one communicates with a studio , two bathrooms and a collective space , library and reception before the rooms .

The ground floor consists guests rooms with a wood stove Tyrol . In the back is ablated an auxiliary space .

In the basement are additional utility rooms

1. terrace
2. Living/ dinning room
3. Malaparte's bedroom
4. bedroom
5. bathroom
6. studio
7. Guest's room
8. Utility rooms

Private - Public and Movement

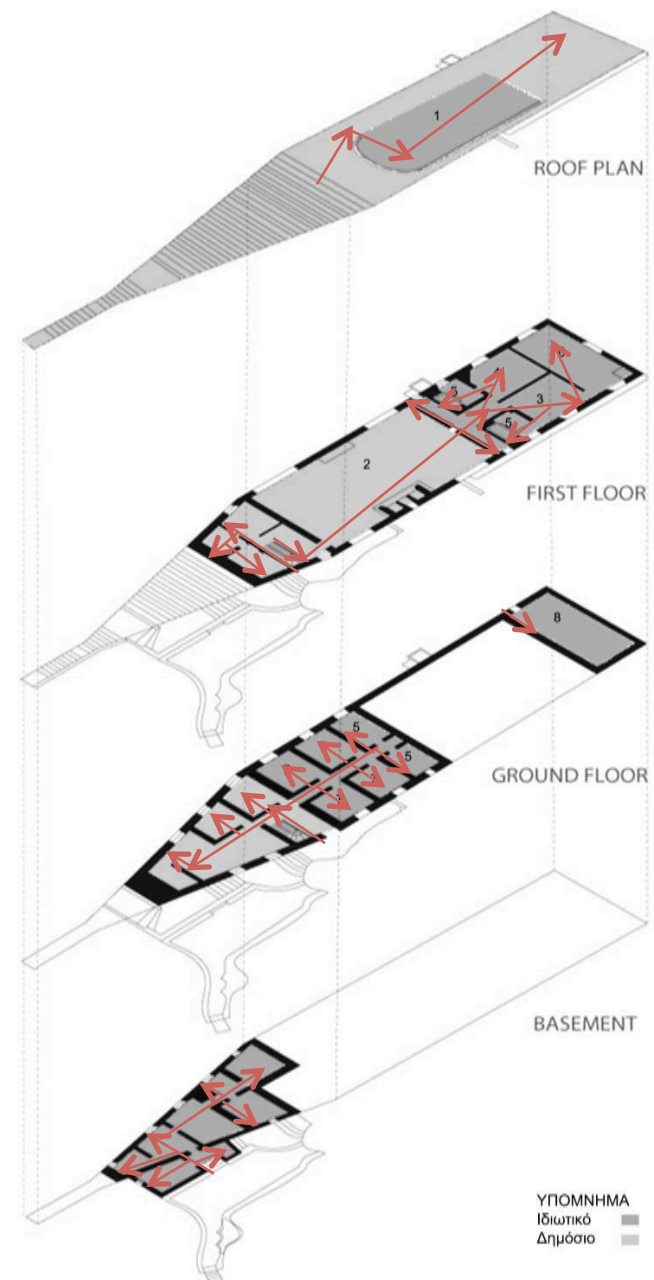
Free movement on the roof of the house and the wall makes a part of the roof more private .

Emphasizes the public-sharing spaces.

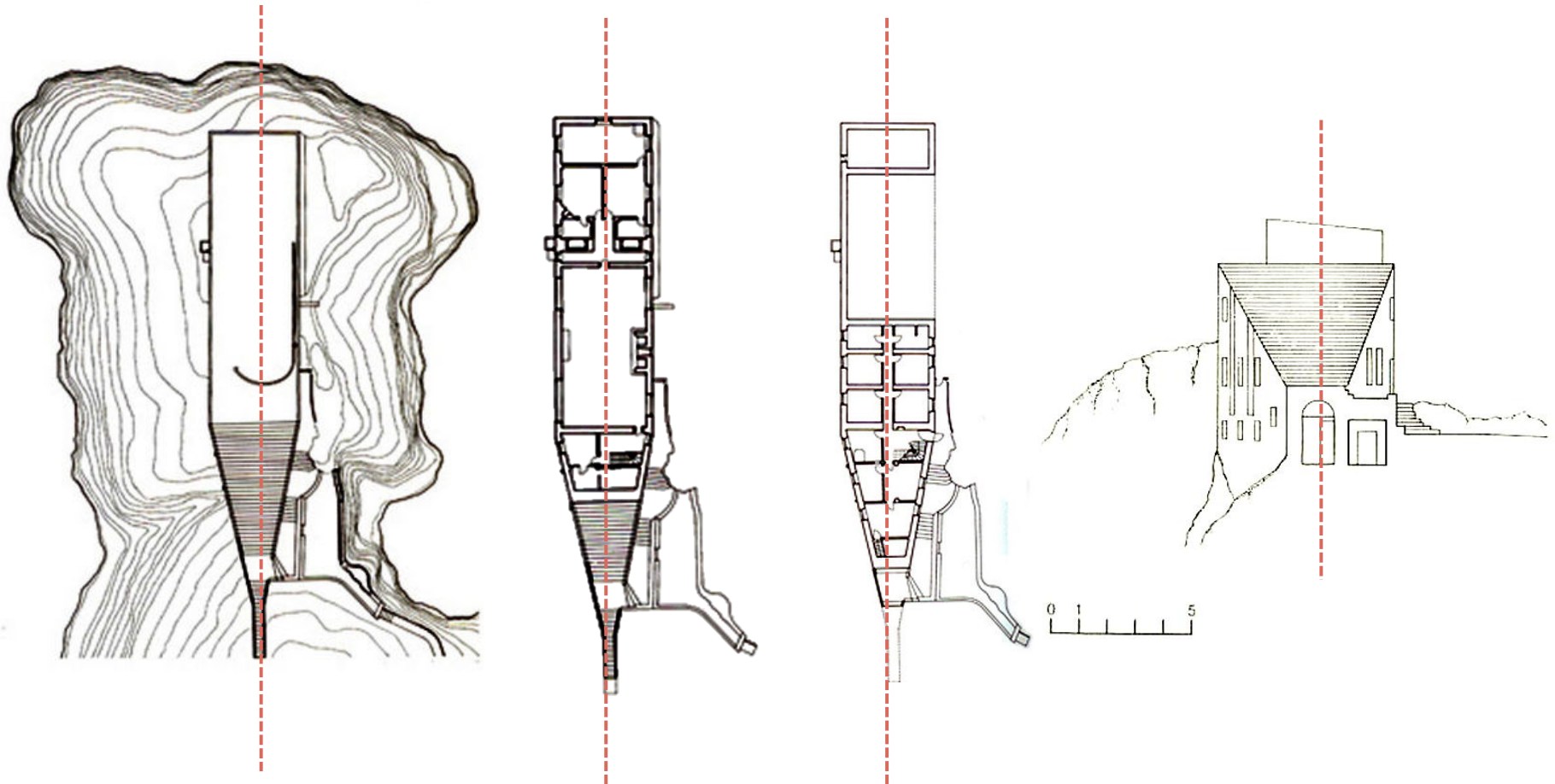
A central corridor -axis divides the ground floor into two, creating symmetry .

The basement utility rooms distributed with asymmetry are separated from the rest house.

Γενικά όλοι οι βοηθητικοί χώροι δεν επικοινωνούν με την όλη κατοικία, διαθέτουν δική τους ξεχωριστή είσοδο.

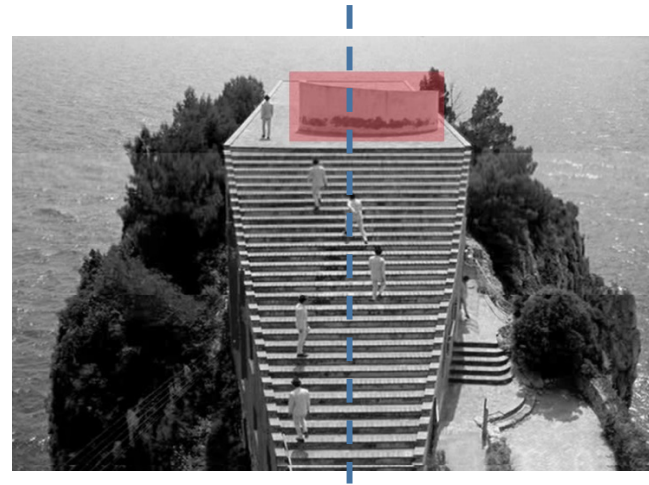
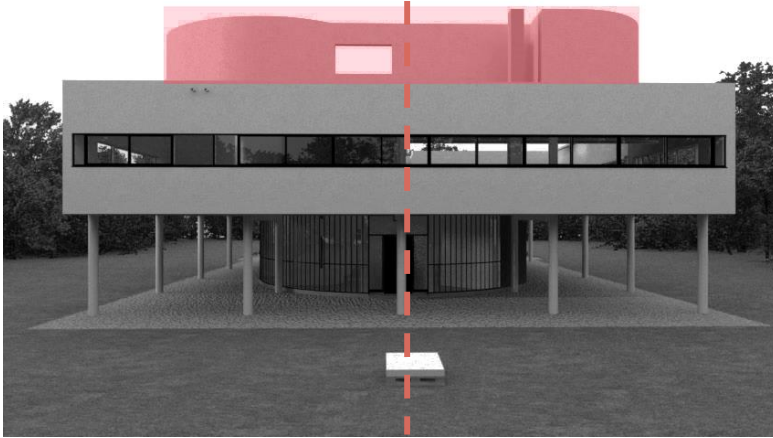


Symmetry of housing



The Symmetry is evident in the exterior of the structure of residence, and internally as shown in plan views of the floor and the ground floor, especially in the bedrooms and toilets.

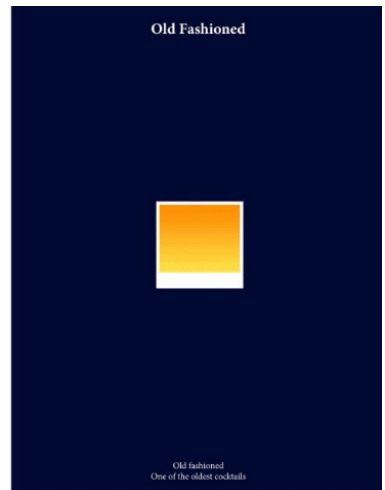
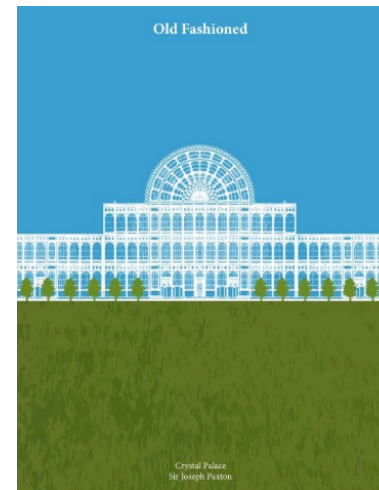
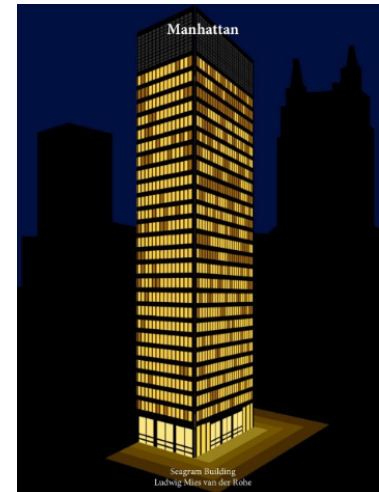
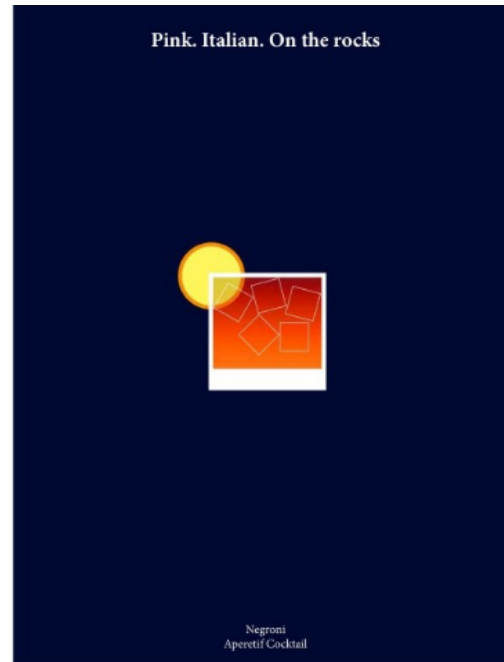
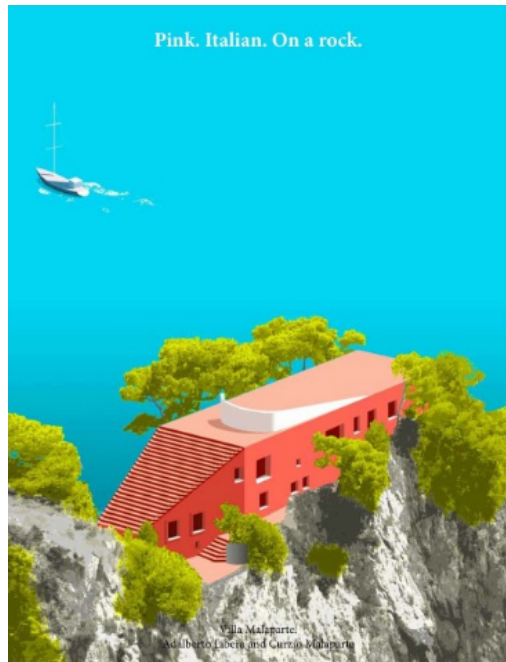
Comparing with Villa Savoye



Villa Savoye, Le Corbusier, France,
1928-1931

Casa Malaparte, Adalberto Libera, Italy,
1937

Drink Like an Architect: Pair your Cocktail with the Perfect Building



Model Framing

